

Explore Historical Performance 2004-2009

**ROBESON HS
(UNIT 1320)
(Grade 9)**

**Office of Research, Evaluation and Accountability
Department of Applied Research**

Reading: Mean Explore Score

- Overall
- by Race
- by Gender
- by Gender for White Students
- by Gender for African American Students
- by Gender for American Indian Students
- by Gender for Asian Students
- by Gender for Hispanic Students
- by English Language Learner Status
- by Individualized Education Program Status
- by Free/Reduced Lunch Status

Math: Mean Explore Score

- Overall
- by Race
- by Gender
- by Gender for White Students
- by Gender for African American Students
- by Gender for American Indian Students
- by Gender for Asian Students
- by Gender for Hispanic Students
- by English Language Learner Status
- by Individualized Education Program Status
- by Free/Reduced Lunch Status

Science: Mean Explore Score

- Overall
- by Race
- by Gender
- by Gender for White Students
- by Gender for African American Students
- by Gender for American Indian Students
- by Gender for Asian Students
- by Gender for Hispanic Students
- by English Language Learner Status
- by Individualized Education Program Status

English: Mean Explore Score

- Overall
- by Race
- by Gender
- by Gender for White Students
- by Gender for African American Students
- by Gender for American Indian Students
- by Gender for Asian Students
- by Gender for Hispanic Students
- by English Language Learner Status
- by Individualized Education Program Status
- by Free/Reduced Lunch Status

Composite: Mean Explore Score

- Overall
- by Race
- by Gender
- by Gender for White Students
- by Gender for African American Students
- by Gender for American Indian Students
- by Gender for Asian Students
- by Gender for Hispanic Students
- by English Language Learner Status
- by Individualized Education Program Status
- by Free/Reduced Lunch Status

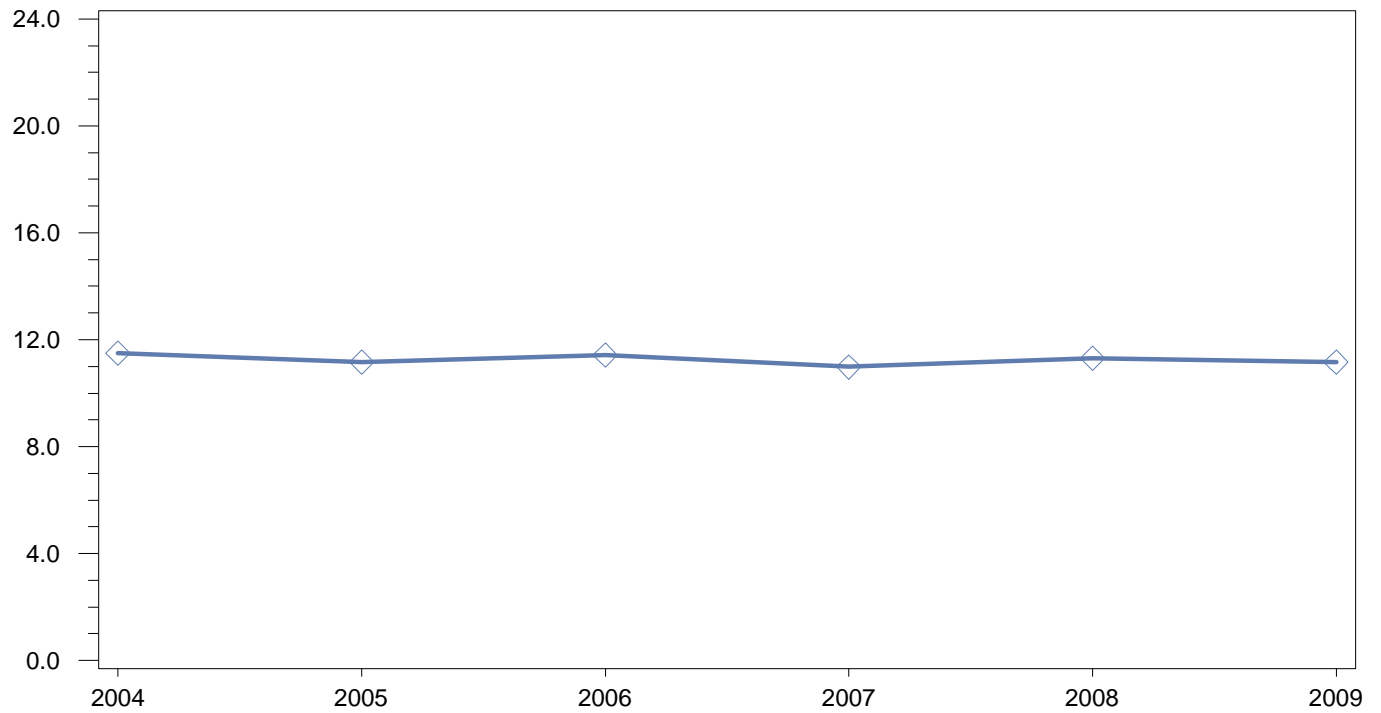
Notes

Citywide and area statistics have been provided for purposes of comparison. The area reported is based on 2009 area assignments. For AMPS schools and Performance schools, the area reported is the area the school would have reported to had it not opted out of the area structure.

Statistics for categories with fewer than 10 students have not been reported. Schools may have some blank or partial graphs as a result.

The graphs in this report show school-level results.

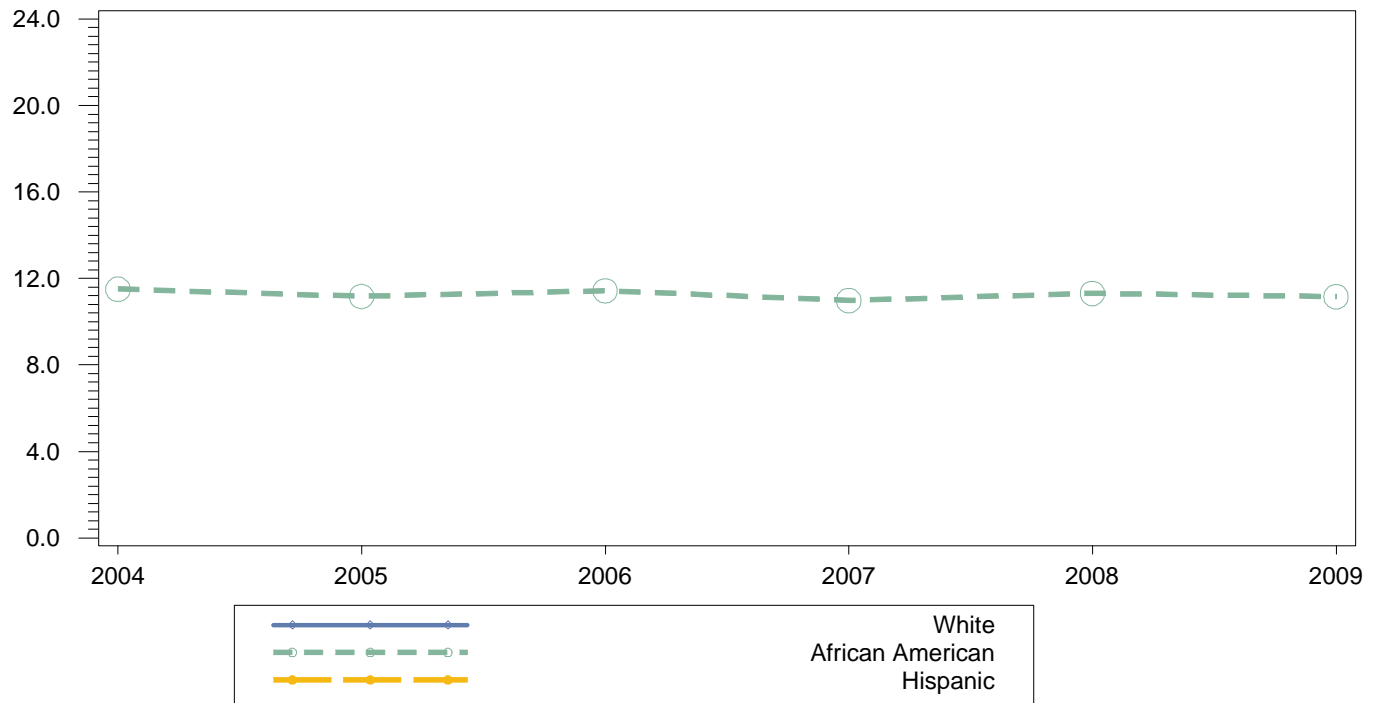
**Reading: Mean Explore Score
Annual Percentage**



City, Area and School Summary

	Year											
	2004		2005		2006		2007		2008		2009	
	N	MEAN	N	MEAN	N	MEAN	N	MEAN	N	MEAN	N	MEAN
City	27,161	13.4	27,857	13.4	28,901	13.3	27,711	13.2	25,727	13.4	26,461	13.2
Area	5,314	12.9	5,140	13.0	5,338	12.7	4,578	12.7	3,809	12.6	3,962	12.5
School	383	11.5	426	11.2	501	11.4	415	11.0	270	11.3	265	11.2

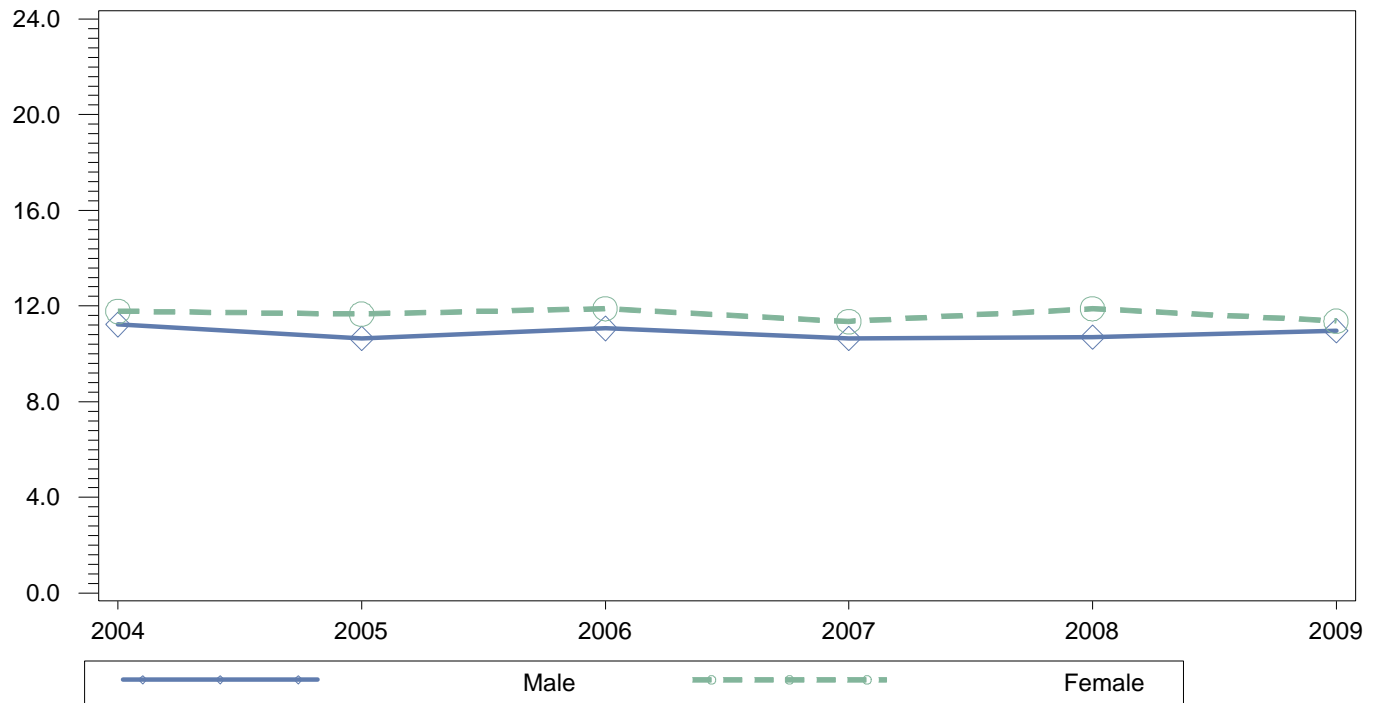
**Reading: Mean Explore Score
Annual Percentage by Race**



Area and Citywide Summary

Race		Year											
		2004		2005		2006		2007		2008		2009	
		N	MEAN	N	MEAN	N	MEAN	N	MEAN	N	MEAN	N	MEAN
African American	City	14,607	12.9	14,679	12.9	15,012	12.7	14,395	12.7	12,864	12.8	13,072	12.7
	Area	4,721	12.9	4,493	13.0	4,804	12.6	3,991	12.6	3,355	12.6	3,395	12.4
	School	383	11.5	425	11.2	500	11.4	415	11.0	270	11.3	265	11.2
Asian	City	943	15.7	981	15.8	1,012	15.7	877	15.9	984	16.0	923	15.9
	Area	4	.	4	.	3	.	5	.	3	.	3	.
Hispanic	City	9,106	13.2	9,676	13.2	10,319	13.1	10,051	13.1	9,624	13.2	10,378	13.1
	Area	466	13.3	546	13.0	453	13.2	524	13.3	389	13.1	503	12.8
	School	.	.	1
White	City	2,461	16.1	2,474	16.3	2,511	16.0	2,352	16.0	2,193	16.3	2,048	16.2
	Area	118	13.9	95	14.0	71	13.7	55	13.4	58	12.8	59	13.1
	School	1

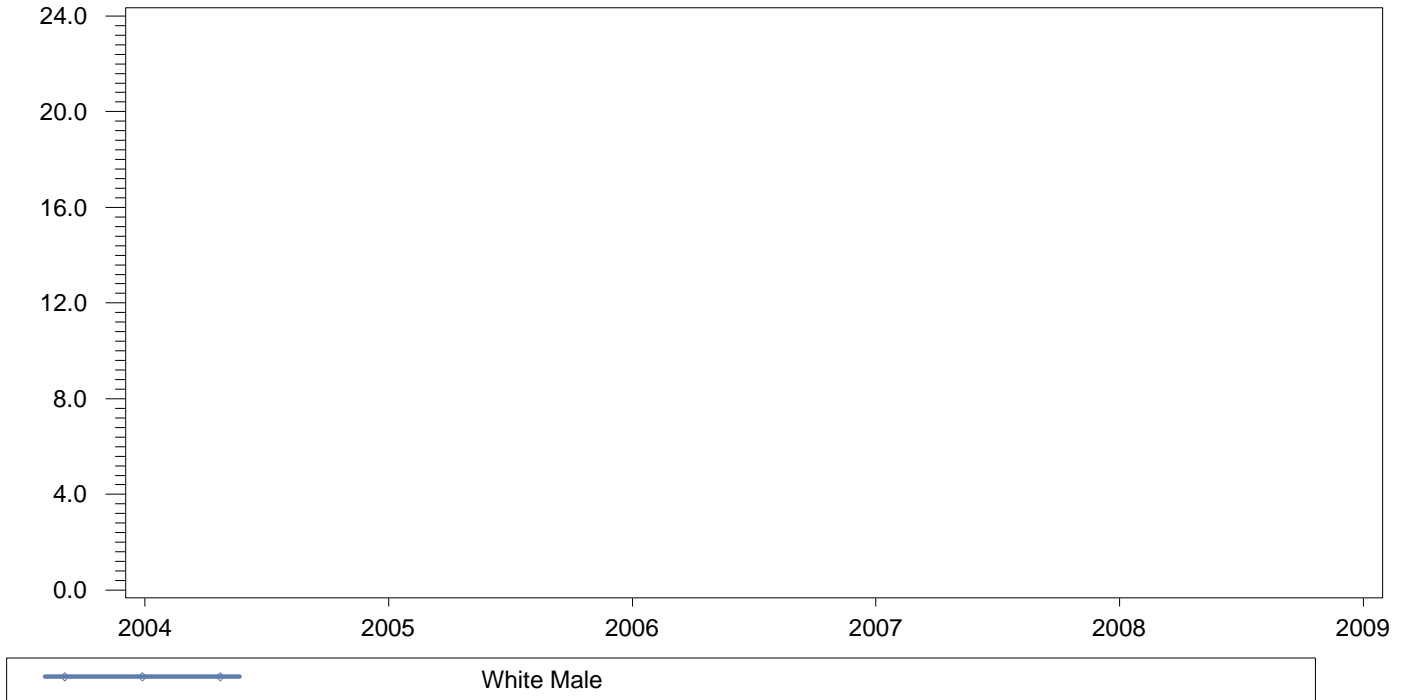
**Reading: Mean Explore Score
Annual Percentage by Gender**



Area and Citywide Summary

Gender		Year											
		2004		2005		2006		2007		2008		2009	
		N	MEAN	N	MEAN	N	MEAN	N	MEAN	N	MEAN	N	MEAN
Female	City	13,933	13.8	14,153	13.9	14,633	13.6	13,967	13.6	13,107	13.8	13,364	13.6
	Area	2,840	13.4	2,666	13.6	2,755	13.3	2,355	13.1	1,994	13.1	2,009	12.9
	School	193	11.8	218	11.7	223	11.9	194	11.4	138	11.9	127	11.4
Male	City	13,225	12.9	13,700	13.0	14,268	12.8	13,744	12.8	12,620	12.9	13,097	12.8
	Area	2,474	12.4	2,474	12.3	2,583	12.1	2,223	12.2	1,815	12.1	1,953	12.0
	School	190	11.2	208	10.7	278	11.1	221	10.7	132	10.7	138	11.0

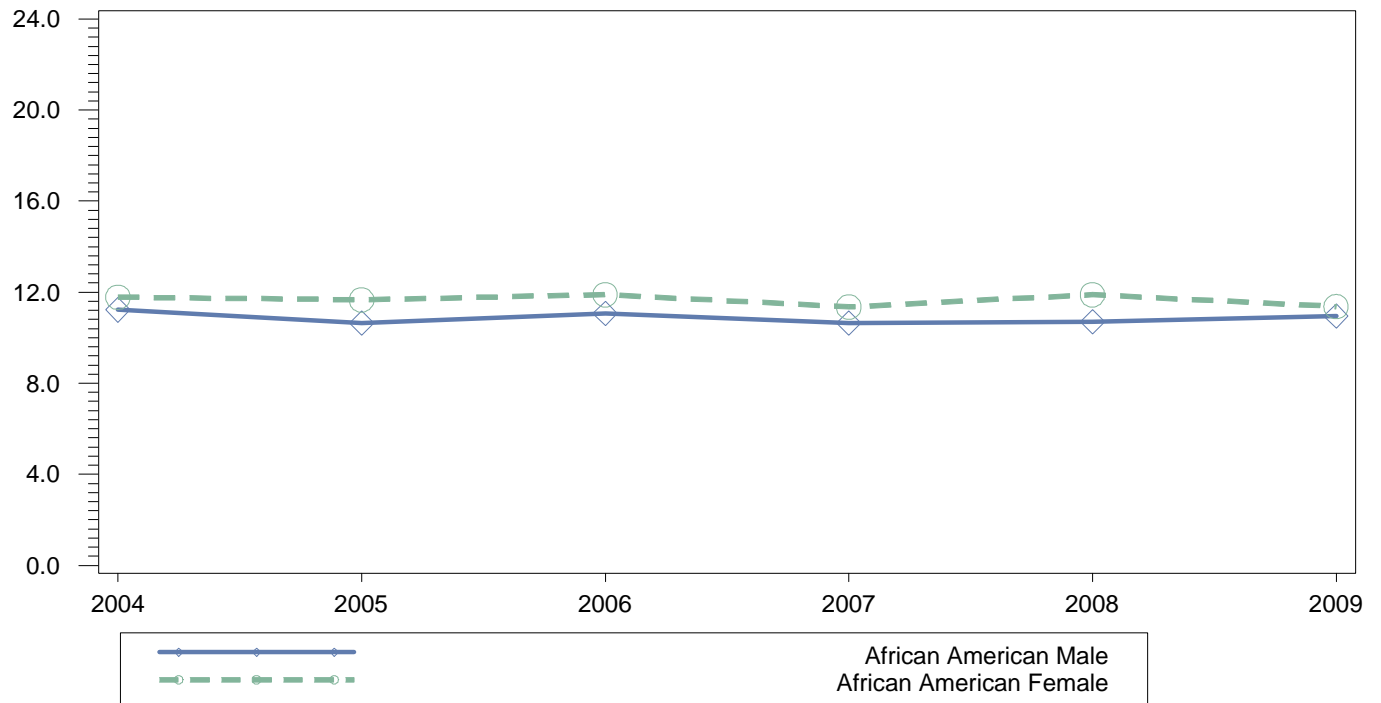
**Reading: Mean Explore Score
Annual Percentage by Gender for Race = White**



Area and Citywide Summary

		Year											
		2004		2005		2006		2007		2008		2009	
<i>Gender for Race = White</i>		<i>N</i>	<i>MEAN</i>	<i>N</i>	<i>MEAN</i>	<i>N</i>	<i>MEAN</i>	<i>N</i>	<i>MEAN</i>	<i>N</i>	<i>MEAN</i>	<i>N</i>	<i>MEAN</i>
White Female	City	1,213	16.6	1,241	16.8	1,203	16.4	1,178	16.5	1,095	16.8	1,023	16.6
	Area	58	14.2	39	15.2	31	14.3	32	13.4	25	13.1	24	13.9
White Male	City	1,248	15.6	1,233	15.8	1,308	15.6	1,174	15.4	1,098	15.7	1,025	15.7
	Area	60	13.6	56	13.3	40	13.3	23	13.3	33	12.5	35	12.5
	School	1

**Reading: Mean Explore Score
Annual Percentage by Gender for Race = African American**



Area and Citywide Summary

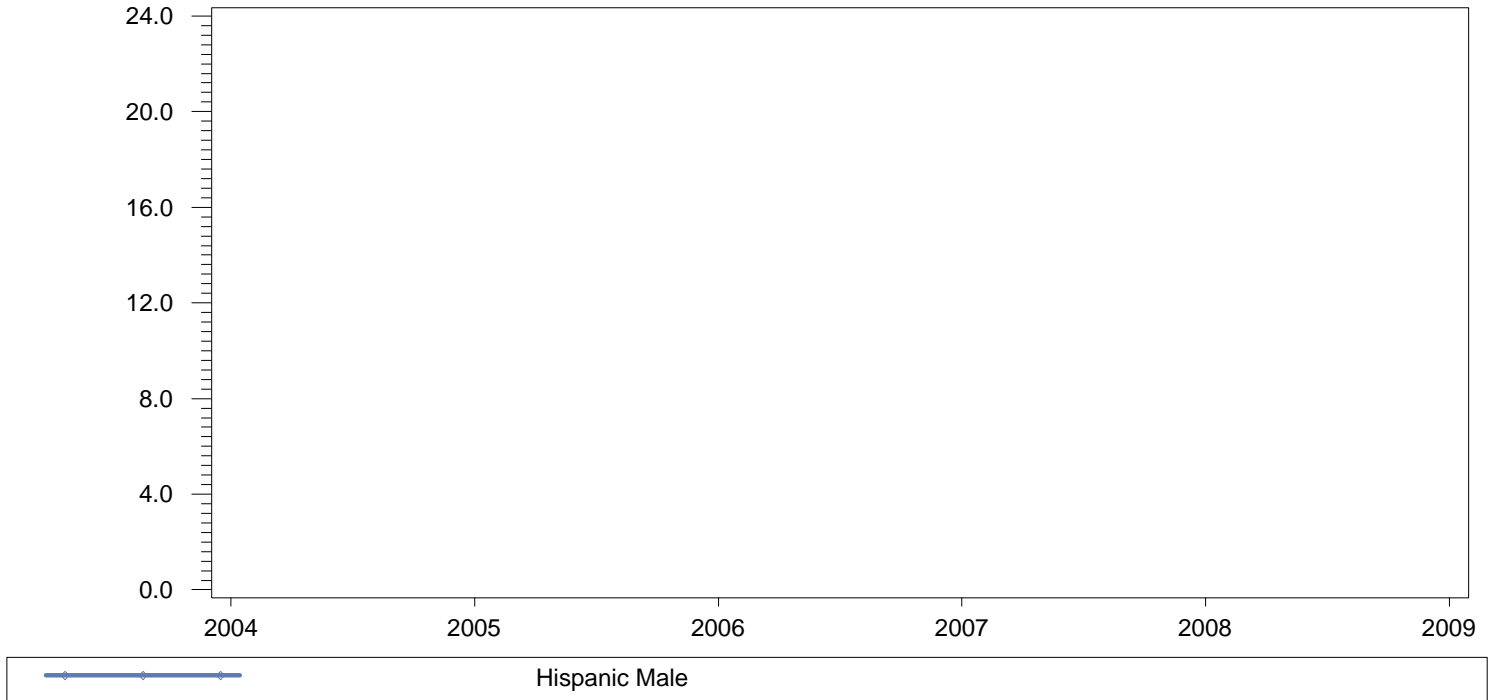
Gender for Race = African American		Year											
		2004		2005		2006		2007		2008		2009	
		N	MEAN	N	MEAN	N	MEAN	N	MEAN	N	MEAN	N	MEAN
African American Female	City	7,671	13.4	7,614	13.5	7,838	13.2	7,341	13.2	6,680	13.4	6,691	13.1
	Area	2,556	13.4	2,355	13.6	2,490	13.2	2,049	13.1	1,764	13.1	1,736	12.8
	School	193	11.8	218	11.7	223	11.9	194	11.4	138	11.9	127	11.4
African American Male	City	6,936	12.3	7,065	12.4	7,174	12.2	7,054	12.1	6,184	12.3	6,381	12.2
	Area	2,165	12.3	2,138	12.3	2,314	12.0	1,942	12.0	1,591	12.0	1,659	12.0
	School	190	11.2	207	10.7	277	11.1	221	10.7	132	10.7	138	11.0

**Reading: Mean Explore Score
Annual Percentage by Gender for Race = Asian**

Area and Citywide Summary

		Year											
		2004		2005		2006		2007		2008		2009	
<i>Gender for Race = Asian</i>		<i>N</i>	<i>MEAN</i>	<i>N</i>	<i>MEAN</i>	<i>N</i>	<i>MEAN</i>	<i>N</i>	<i>MEAN</i>	<i>N</i>	<i>MEAN</i>	<i>N</i>	<i>MEAN</i>
Asian Female	City	486	15.8	505	15.9	477	16.1	444	16.1	477	16.2	444	16.2
	Area	2	.	2	.	2	.	2	.	.	.	1	.
Asian Male	City	457	15.5	476	15.7	535	15.4	433	15.7	507	15.8	479	15.5
	Area	2	.	2	.	1	.	3	.	3	.	2	.

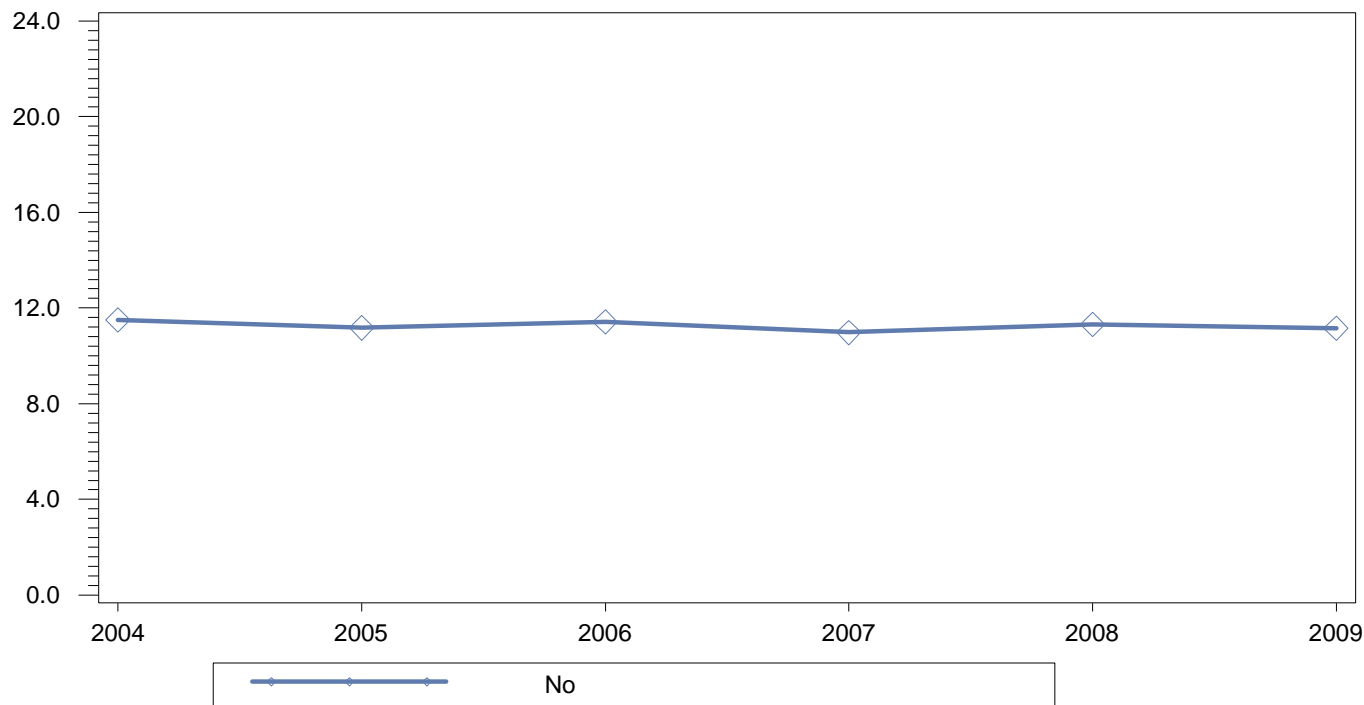
**Reading: Mean Explore Score
Annual Percentage by Gender for Race = Hispanic**



Area and Citywide Summary

		Year											
		2004		2005		2006		2007		2008		2009	
<i>Gender for Race = Hispanic</i>		<i>N</i>	<i>MEAN</i>	<i>N</i>	<i>MEAN</i>	<i>N</i>	<i>MEAN</i>	<i>N</i>	<i>MEAN</i>	<i>N</i>	<i>MEAN</i>	<i>N</i>	<i>MEAN</i>
Hispanic Female	City	4,535	13.6	4,769	13.6	5,088	13.4	4,982	13.4	4,817	13.5	5,187	13.5
	Area	220	13.5	268	13.6	227	13.6	271	13.4	203	13.3	247	13.2
Hispanic Male	City	4,571	12.9	4,907	12.8	5,231	12.8	5,069	12.8	4,807	12.9	5,191	12.8
	Area	246	13.0	278	12.4	226	12.9	253	13.1	186	12.9	256	12.3
	School	.	.	1

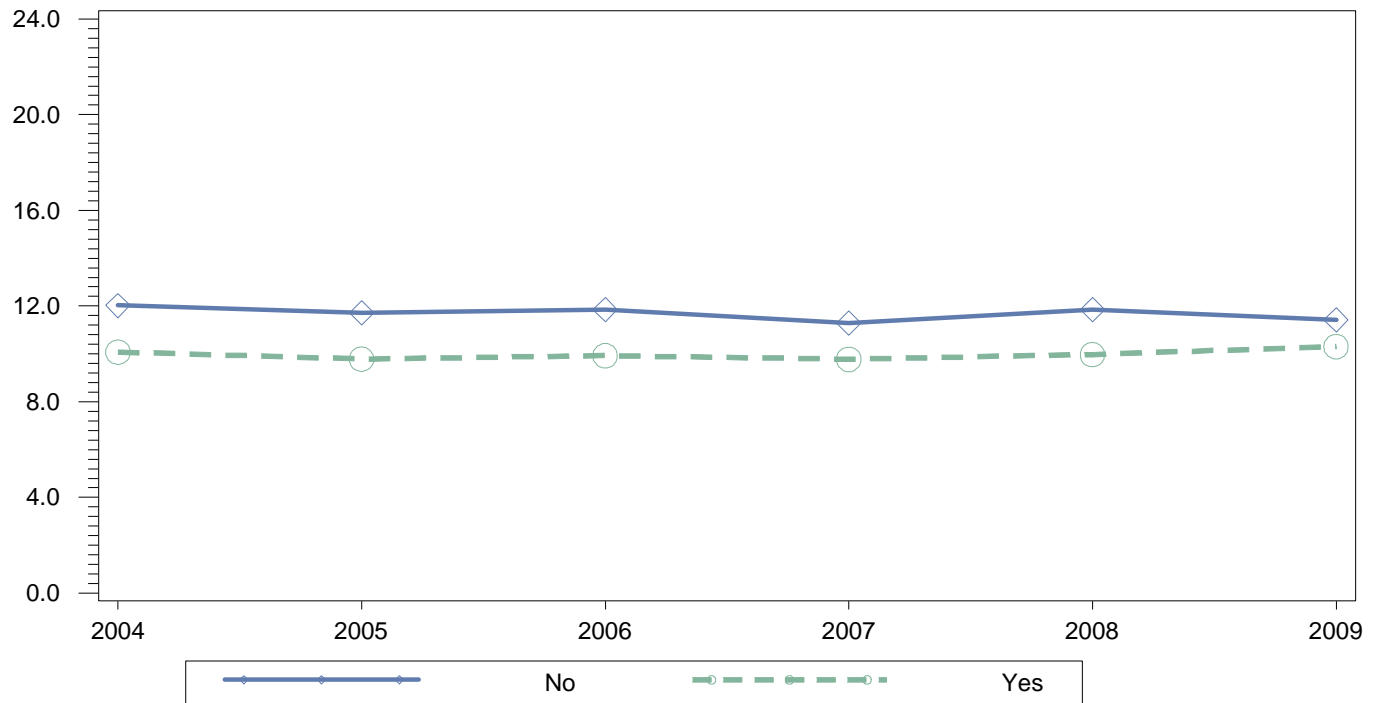
**Reading: Mean Explore Score
Annual Percentage by English Language Learner Status**



Area and Citywide Summary

		Year											
		2004		2005		2006		2007		2008		2009	
English Language Learner Status		N	MEAN	N	MEAN	N	MEAN	N	MEAN	N	MEAN	N	MEAN
No	City	26,233	13.5	26,803	13.5	27,791	13.4	26,660	13.3	24,586	13.5	25,369	13.4
	Area	5,297	12.9	5,112	13.0	5,317	12.7	4,538	12.7	3,768	12.7	3,920	12.5
	School	383	11.5	426	11.2	501	11.4	415	11.0	270	11.3	265	11.2
Yes	City	928	10.9	1,054	10.8	1,110	10.7	1,051	10.7	1,141	10.9	1,092	10.7
	Area	17	10.7	28	10.5	21	11.2	40	11.5	41	11.1	42	10.7

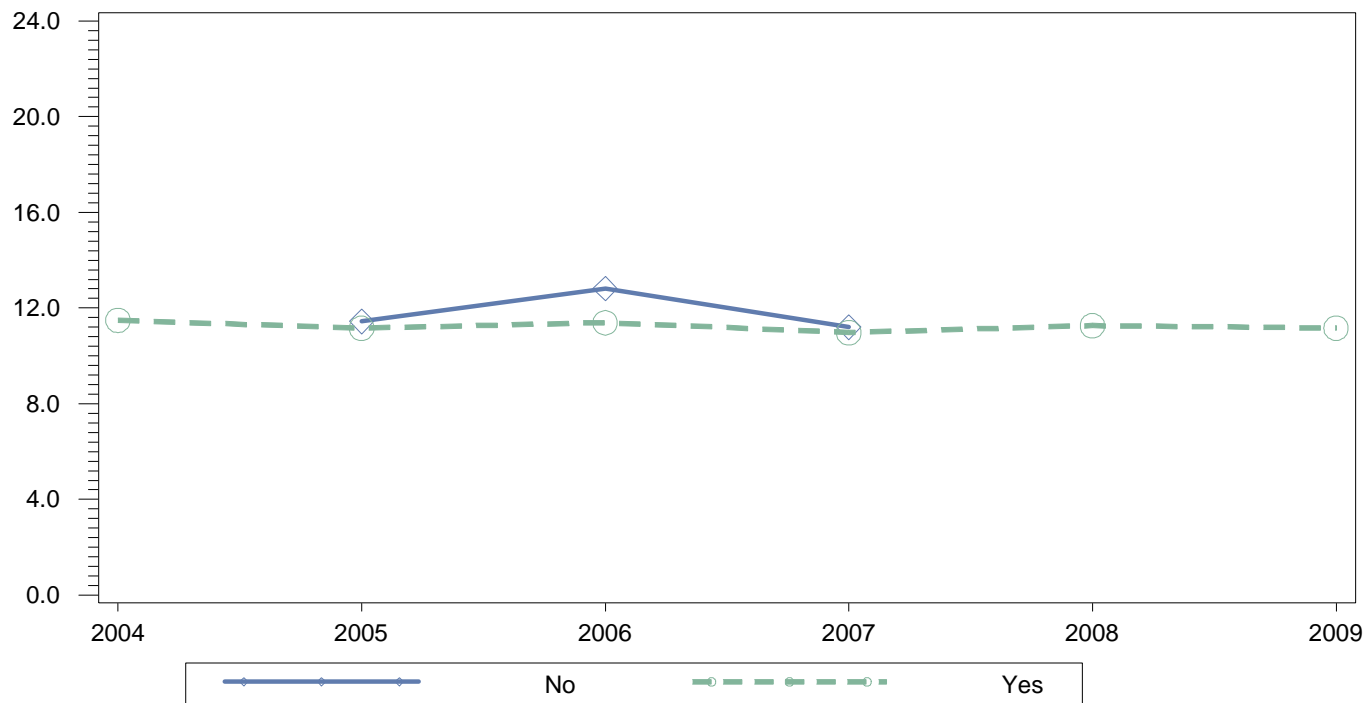
**Reading: Mean Explore Score
Annual Percentage by Individualized Education expl Status**



Area and Citywide Summary

		Year											
		2004		2005		2006		2007		2008		2009	
Individualized Education expl Status		N	MEAN	N	MEAN	N	MEAN	N	MEAN	N	MEAN	N	MEAN
No	City	23,697	13.8	24,422	13.8	25,418	13.6	24,383	13.6	22,788	13.8	23,774	13.5
	Area	4,597	13.3	4,458	13.4	4,641	13.1	4,059	13.0	3,314	13.0	3,458	12.8
	School	281	12.0	305	11.7	391	11.9	330	11.3	192	11.9	200	11.4
Yes	City	3,464	10.5	3,435	10.6	3,483	10.6	3,328	10.5	2,939	10.5	2,687	10.7
	Area	717	10.4	682	10.4	697	10.3	519	10.3	495	10.2	504	10.5
	School	102	10.1	121	9.8	110	9.9	85	9.8	78	10.0	65	10.3

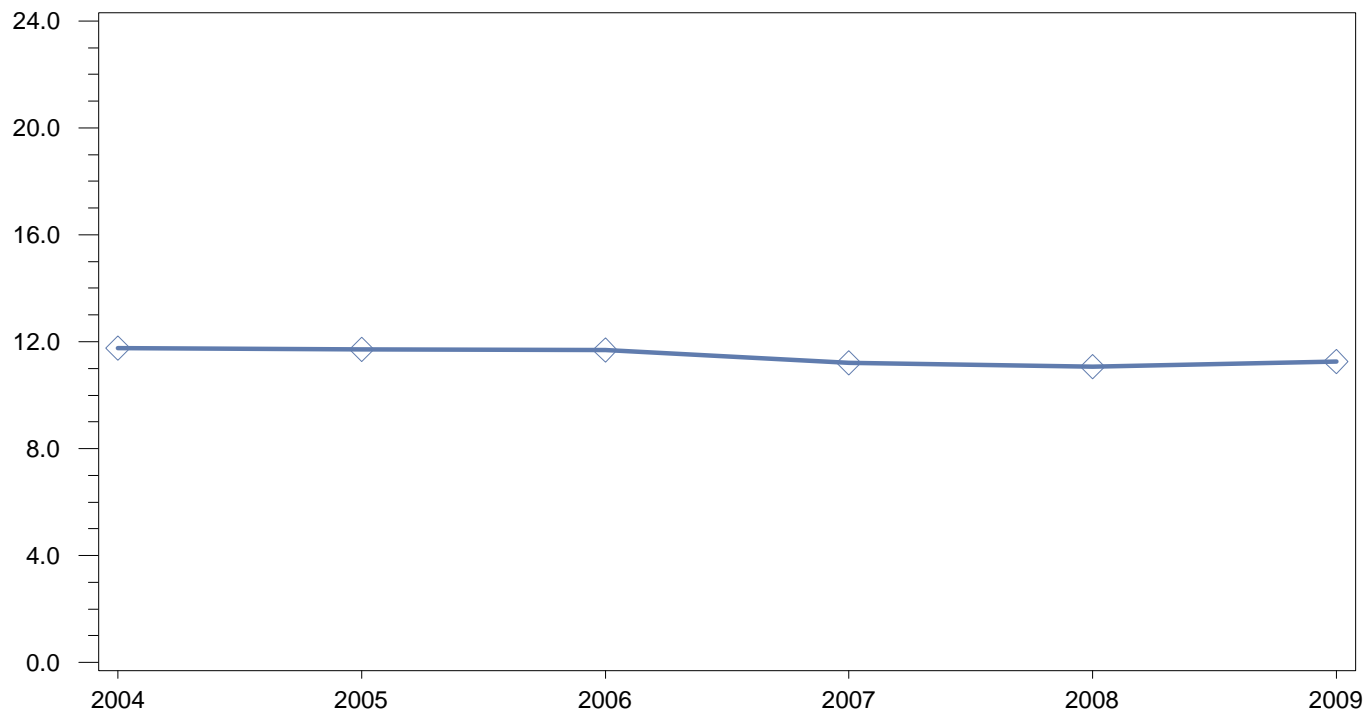
**Reading: Mean Explore Score
Annual Percentage by Free/Reduced Lunch Status**



Area and Citywide Summary

		Year											
		2004		2005		2006		2007		2008		2009	
<i>Free Reduced Lunch Status</i>		<i>N</i>	<i>MEAN</i>	<i>N</i>	<i>MEAN</i>	<i>N</i>	<i>MEAN</i>	<i>N</i>	<i>MEAN</i>	<i>N</i>	<i>MEAN</i>	<i>N</i>	<i>MEAN</i>
No	City	4,289	15.6	4,471	15.5	4,607	15.6	4,709	15.4	6,263	14.6	4,336	15.2
	Area	747	13.8	729	14.0	687	14.0	501	13.8	469	13.5	426	12.9
	School	6	.	25	11.4	16	12.8	15	11.2	7	.	7	.
Yes	City	22,872	13.0	23,386	13.0	24,294	12.8	23,002	12.7	19,464	13.0	22,125	12.9
	Area	4,567	12.8	4,411	12.8	4,651	12.5	4,077	12.5	3,340	12.5	3,536	12.4
	School	377	11.5	401	11.2	485	11.4	400	11.0	263	11.3	258	11.2

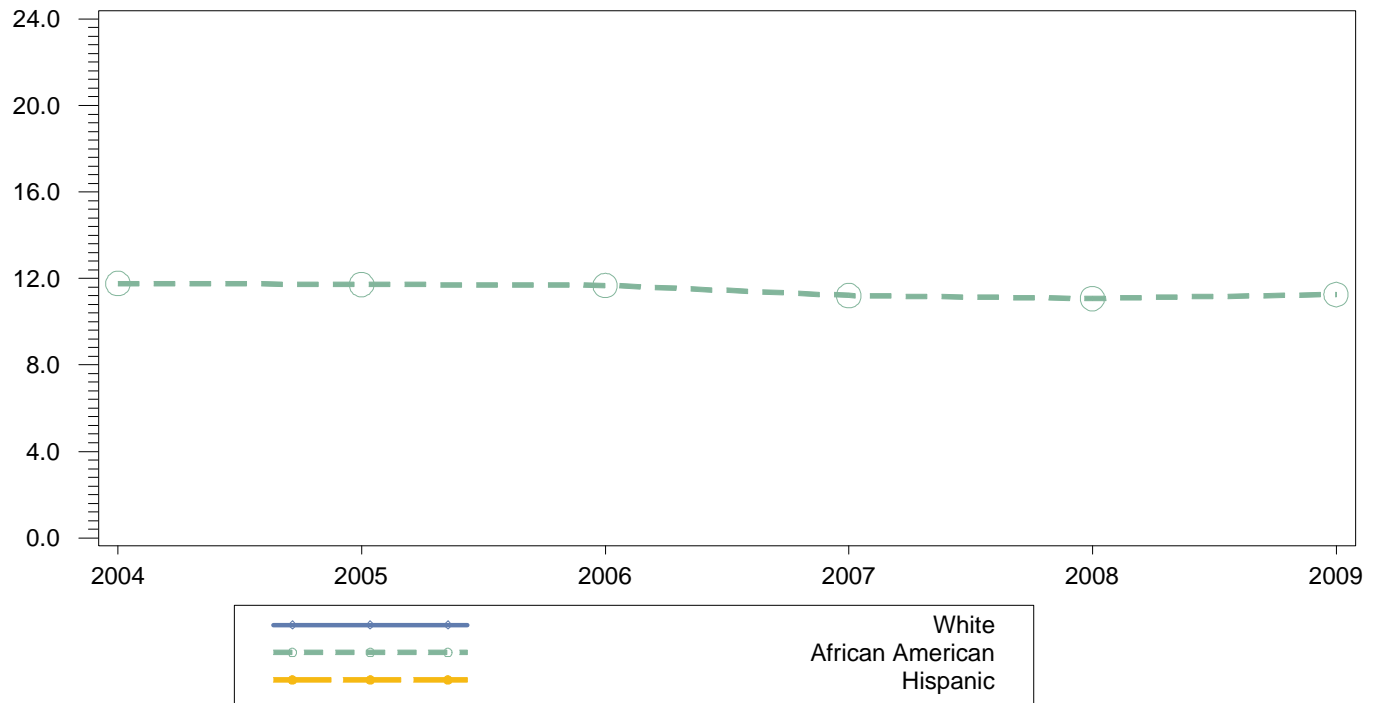
**Math: Mean Explore Score
Annual Percentage**



City, Area and School Summary

	Year											
	2004		2005		2006		2007		2008		2009	
	N	MEAN	N	MEAN	N	MEAN	N	MEAN	N	MEAN	N	MEAN
City	27,164	13.8	27,904	13.9	28,941	13.7	27,713	13.7	25,746	14.0	26,500	13.9
Area	5,301	12.9	5,152	13.3	5,344	12.8	4,581	12.8	3,816	12.8	3,972	12.9
School	383	11.8	431	11.7	501	11.7	415	11.2	271	11.1	266	11.3

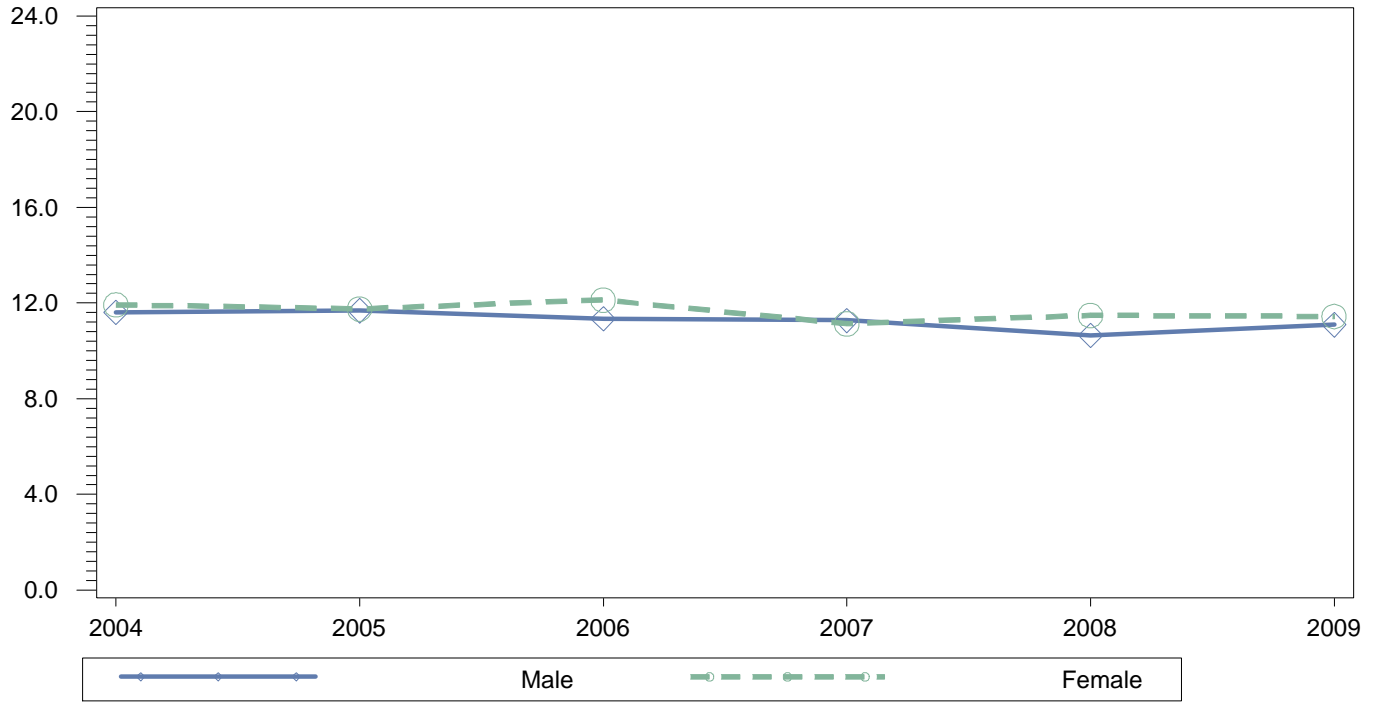
**Math: Mean Explore Score
Annual Percentage by Race**



Area and Citywide Summary

Race		Year											
		2004		2005		2006		2007		2008		2009	
		N	MEAN	N	MEAN	N	MEAN	N	MEAN	N	MEAN	N	MEAN
African American	City	14,604	12.8	14,712	13.0	15,040	12.7	14,392	12.6	12,883	13.0	13,105	13.0
	Area	4,707	12.8	4,505	13.2	4,808	12.7	3,994	12.6	3,362	12.6	3,406	12.7
	School	383	11.8	430	11.7	500	11.7	415	11.2	271	11.1	266	11.3
Asian	City	943	17.8	980	18.0	1,014	18.0	877	18.1	984	18.4	923	17.7
	Area	4	.	4	.	3	.	5	.	3	.	3	.
Hispanic	City	9,113	14.1	9,689	14.1	10,329	14.0	10,055	14.0	9,624	14.3	10,382	14.1
	Area	468	14.1	546	13.7	454	14.2	524	14.0	389	14.1	502	13.5
	School	.	.	1
White	City	2,460	16.8	2,476	16.9	2,511	16.8	2,353	16.8	2,193	17.2	2,050	16.8
	Area	117	14.0	95	14.8	72	14.3	55	13.9	58	14.4	59	14.1
	School	1

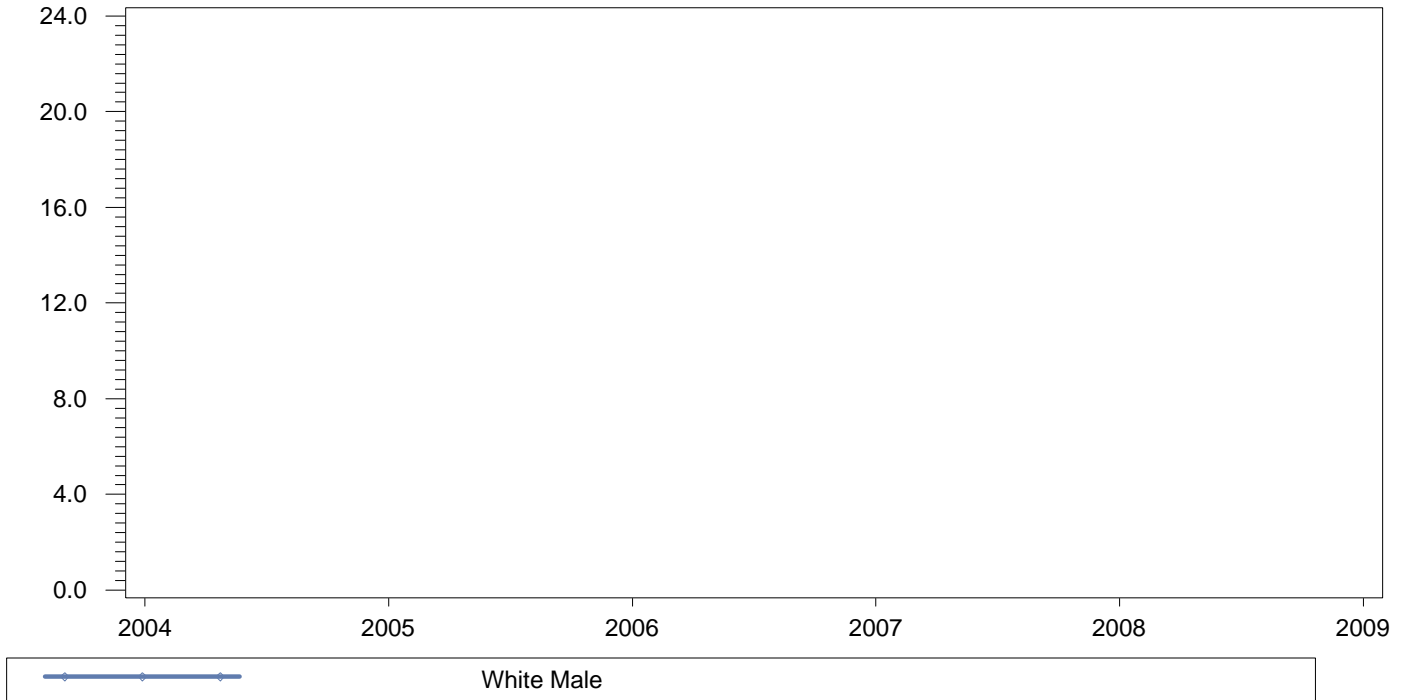
**Math: Mean Explore Score
Annual Percentage by Gender**



Area and Citywide Summary

Gender		Year											
		2004		2005		2006		2007		2008		2009	
		N	MEAN	N	MEAN	N	MEAN	N	MEAN	N	MEAN	N	MEAN
Female	City	13,932	14.0	14,168	14.2	14,639	14.0	13,960	13.9	13,098	14.3	13,376	14.0
	Area	2,835	13.2	2,668	13.6	2,755	13.2	2,355	13.0	1,997	13.1	2,013	13.1
	School	193	11.9	218	11.8	223	12.1	194	11.1	138	11.5	127	11.4
Male	City	13,229	13.6	13,732	13.6	14,302	13.5	13,753	13.5	12,648	13.8	13,124	13.8
	Area	2,466	12.6	2,484	12.9	2,589	12.4	2,226	12.6	1,819	12.4	1,959	12.7
	School	190	11.6	213	11.7	278	11.3	221	11.3	133	10.6	139	11.1

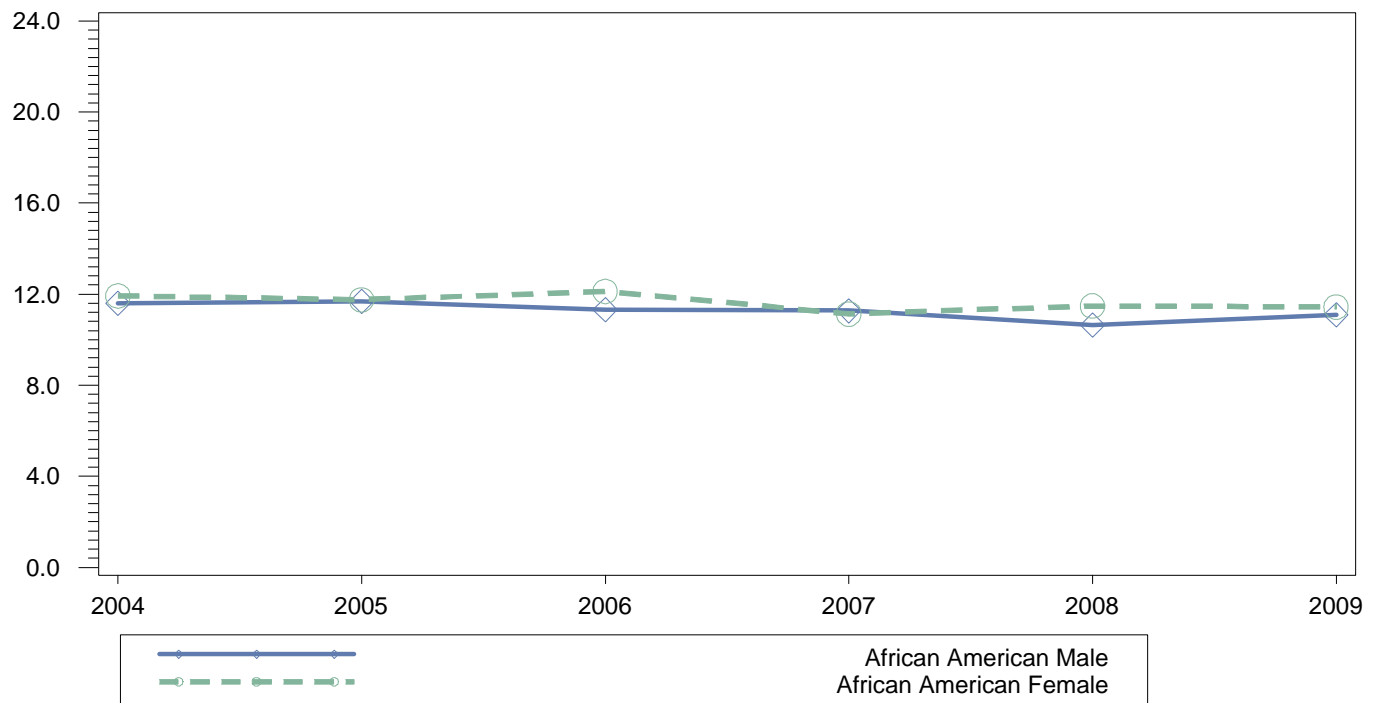
**Math: Mean Explore Score
Annual Percentage by Gender for Race = White**



Area and Citywide Summary

		Year											
		2004		2005		2006		2007		2008		2009	
<i>Gender for Race = White</i>		<i>N</i>	<i>MEAN</i>	<i>N</i>	<i>MEAN</i>	<i>N</i>	<i>MEAN</i>	<i>N</i>	<i>MEAN</i>	<i>N</i>	<i>MEAN</i>	<i>N</i>	<i>MEAN</i>
White Female	City	1,212	17.2	1,242	17.1	1,203	17.0	1,178	17.1	1,095	17.5	1,024	16.9
	Area	57	14.5	39	14.9	31	15.1	32	14.1	25	14.6	24	14.3
White Male	City	1,248	16.5	1,234	16.7	1,308	16.6	1,175	16.5	1,098	16.9	1,026	16.7
	Area	60	13.6	56	14.6	41	13.7	23	13.7	33	14.3	35	14.0
	School	1

**Math: Mean Explore Score
Annual Percentage by Gender for Race = African American**



Area and Citywide Summary

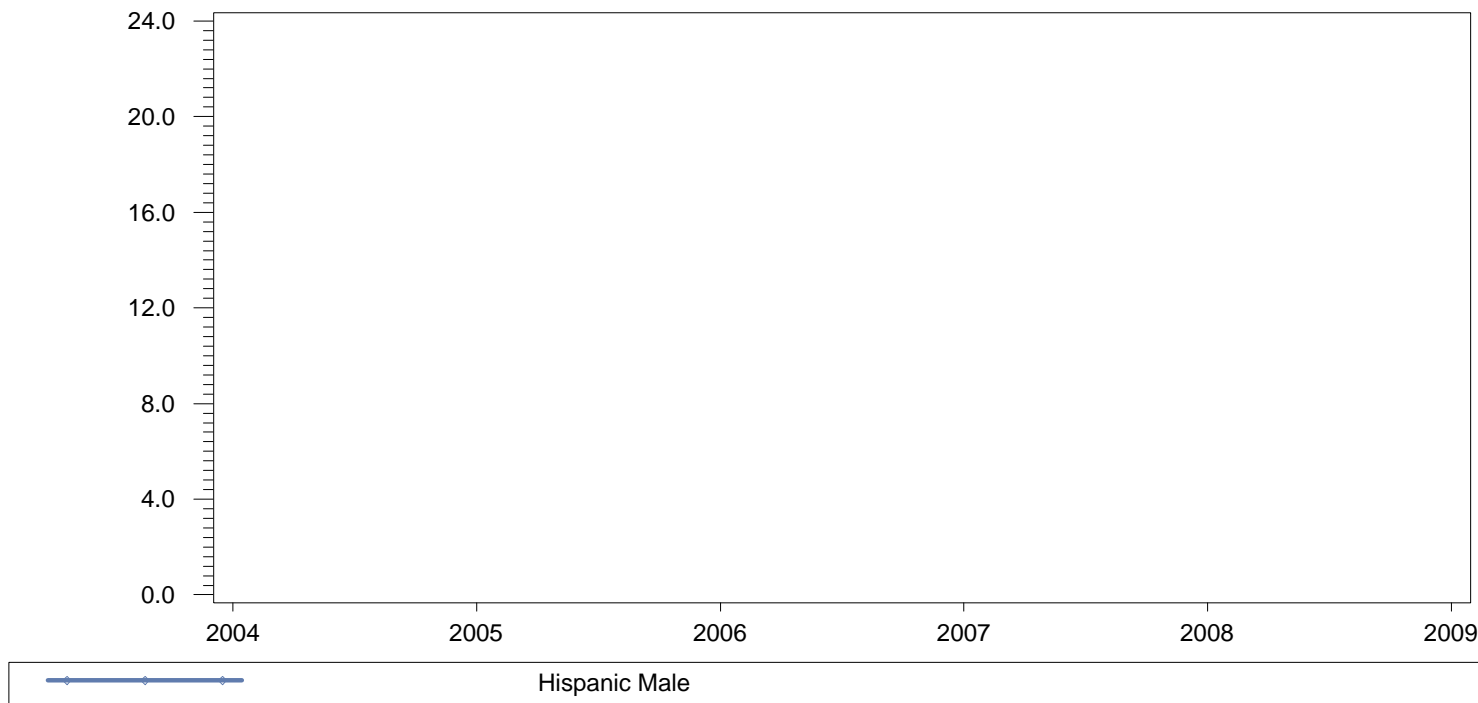
Gender for Race = African American		Year											
		2004		2005		2006		2007		2008		2009	
		N	MEAN	N	MEAN	N	MEAN	N	MEAN	N	MEAN	N	MEAN
African American Female	City	7,668	13.2	7,623	13.4	7,840	13.1	7,335	12.9	6,672	13.3	6,700	13.2
	Area	2,551	13.1	2,357	13.6	2,490	13.1	2,049	12.8	1,767	13.0	1,740	13.0
	School	193	11.9	218	11.8	223	12.1	194	11.1	138	11.5	127	11.4
African American Male	City	6,936	12.4	7,089	12.6	7,200	12.4	7,057	12.4	6,211	12.6	6,405	12.8
	Area	2,156	12.4	2,148	12.8	2,318	12.2	1,945	12.3	1,595	12.2	1,666	12.5
	School	190	11.6	212	11.7	277	11.3	221	11.3	133	10.6	139	11.1

**Math: Mean Explore Score
Annual Percentage by Gender for Race = Asian**

Area and Citywide Summary

		Year											
		2004		2005		2006		2007		2008		2009	
<i>Gender for Race = Asian</i>		<i>N</i>	<i>MEAN</i>	<i>N</i>	<i>MEAN</i>	<i>N</i>	<i>MEAN</i>	<i>N</i>	<i>MEAN</i>	<i>N</i>	<i>MEAN</i>	<i>N</i>	<i>MEAN</i>
Asian Female	City	486	17.8	505	18.0	478	18.1	444	18.2	477	18.3	444	17.7
	Area	2	.	2	.	2	.	2	.	.	.	1	.
Asian Male	City	457	17.9	475	17.9	536	17.9	433	17.9	507	18.4	479	17.7
	Area	2	.	2	.	1	.	3	.	3	.	2	.

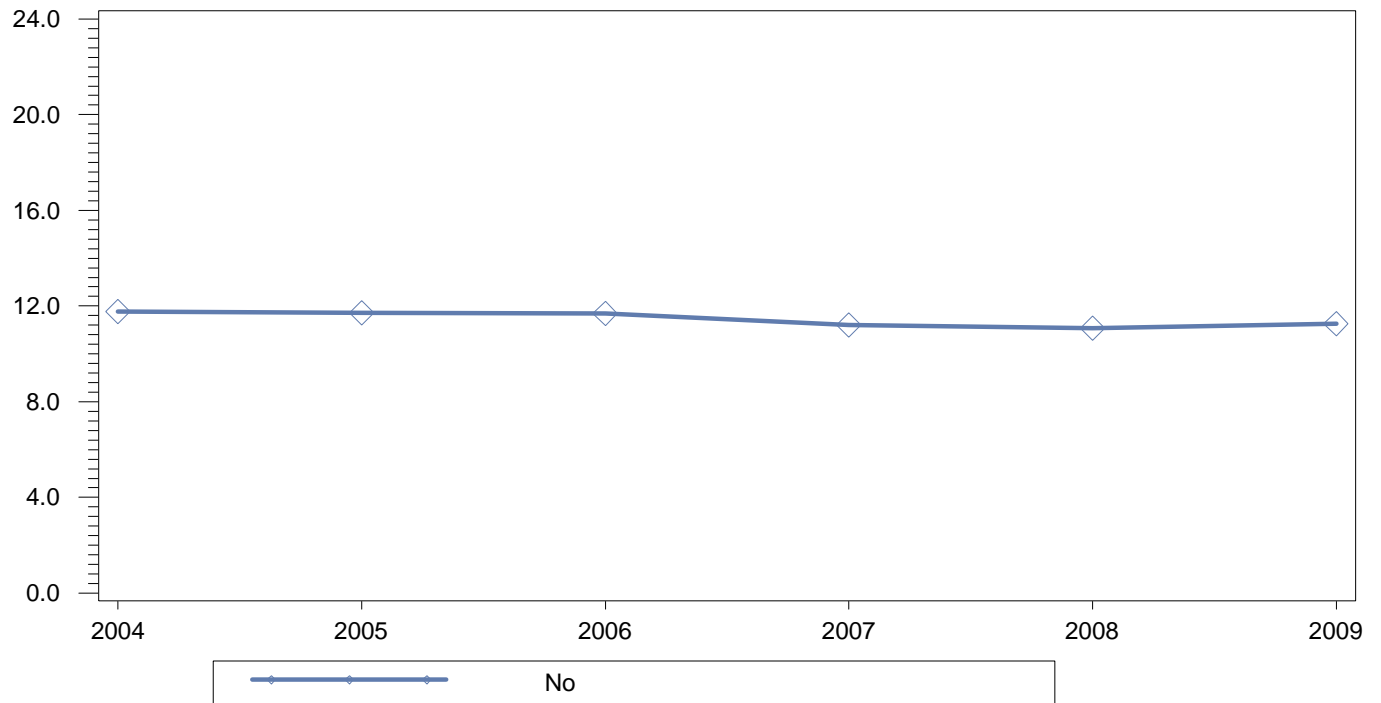
**Math: Mean Explore Score
Annual Percentage by Gender for Race = Hispanic**



Area and Citywide Summary

		Year											
		2004		2005		2006		2007		2008		2009	
<i>Gender for Race = Hispanic</i>		<i>N</i>	<i>MEAN</i>	<i>N</i>	<i>MEAN</i>	<i>N</i>	<i>MEAN</i>	<i>N</i>	<i>MEAN</i>	<i>N</i>	<i>MEAN</i>	<i>N</i>	<i>MEAN</i>
Hispanic Female	City	4,538	14.3	4,774	14.3	5,091	14.2	4,981	14.1	4,816	14.4	5,189	14.1
	Area	221	14.3	268	14.0	227	14.2	271	13.9	203	14.1	247	13.6
Hispanic Male	City	4,575	14.0	4,915	13.9	5,238	13.9	5,074	13.9	4,808	14.2	5,193	14.1
	Area	247	14.0	278	13.4	227	14.2	253	14.1	186	14.2	255	13.4
	School	.	.	1

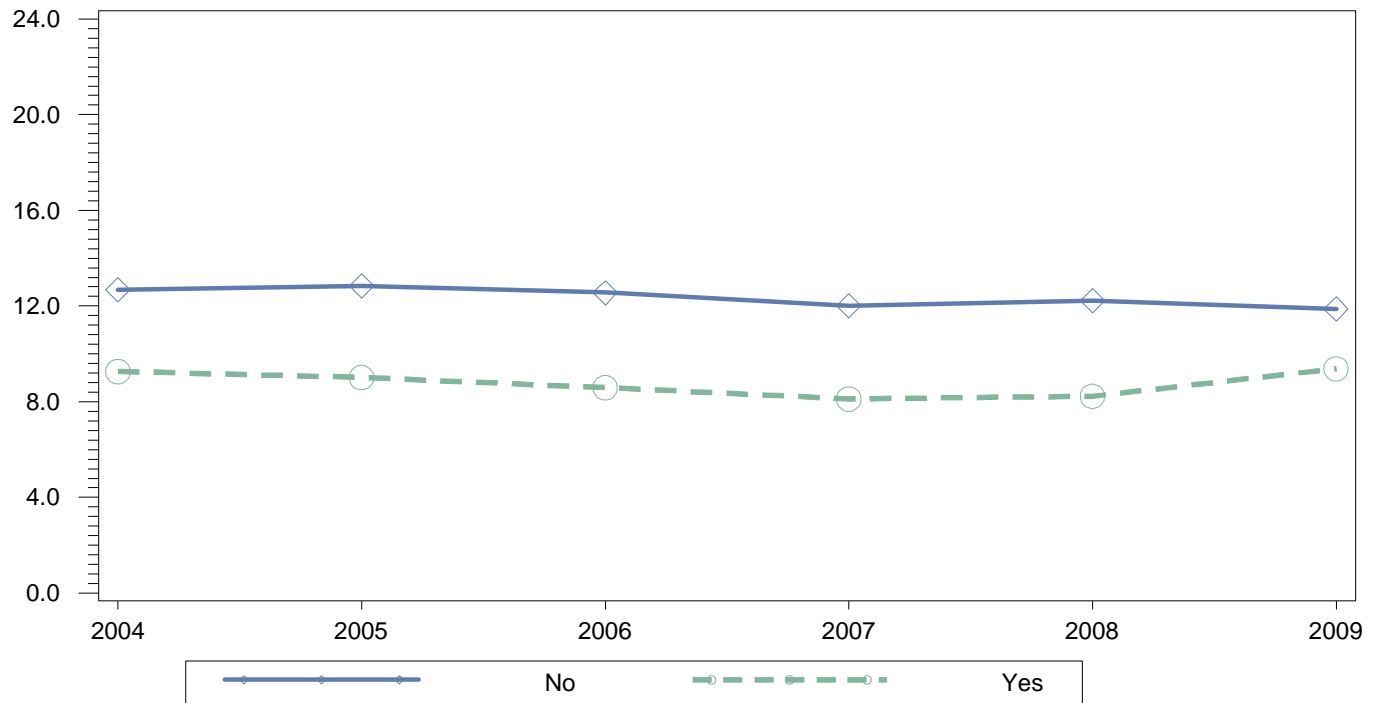
**Math: Mean Explore Score
Annual Percentage by English Language Learner Status**



Area and Citywide Summary

English Language Learner Status	Year											
	2004		2005		2006		2007		2008		2009	
	N	MEAN	N	MEAN	N	MEAN	N	MEAN	N	MEAN	N	MEAN
No City	26,234	13.9	26,849	14.0	27,829	13.8	26,660	13.8	24,605	14.1	25,407	14.0
Area	5,283	12.9	5,124	13.3	5,323	12.8	4,541	12.8	3,775	12.8	3,931	12.9
School	383	11.8	431	11.7	501	11.7	415	11.2	271	11.1	266	11.3
Yes City	930	11.7	1,055	11.5	1,112	11.5	1,053	11.2	1,141	12.0	1,093	11.4
Area	18	11.8	28	9.3	21	12.6	40	11.1	41	12.8	41	11.7

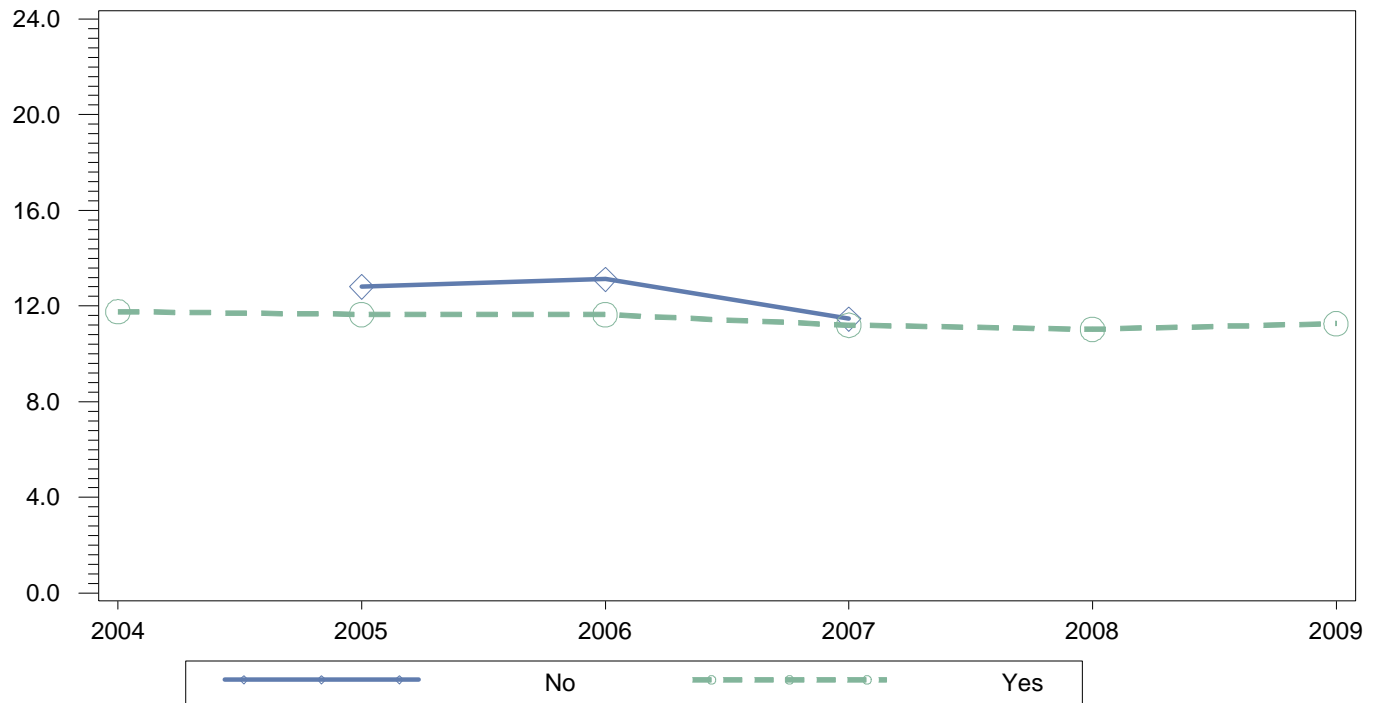
**Math: Mean Explore Score
Annual Percentage by Individualized Education expl Status**



Area and Citywide Summary

		Year											
		2004		2005		2006		2007		2008		2009	
Individualized Education expl Status		N	MEAN	N	MEAN	N	MEAN	N	MEAN	N	MEAN	N	MEAN
No	City	23,683	14.4	24,458	14.5	25,438	14.3	24,377	14.2	22,804	14.6	23,796	14.3
	Area	4,586	13.5	4,464	13.9	4,645	13.3	4,060	13.2	3,321	13.4	3,465	13.3
	School	281	12.7	305	12.8	391	12.6	330	12.0	193	12.2	200	11.9
Yes	City	3,481	9.7	3,446	9.9	3,503	9.9	3,336	9.7	2,942	9.8	2,704	10.3
	Area	715	9.4	688	9.6	699	9.3	521	9.1	495	8.8	507	9.7
	School	102	9.3	126	9.0	110	8.6	85	8.1	78	8.2	66	9.4

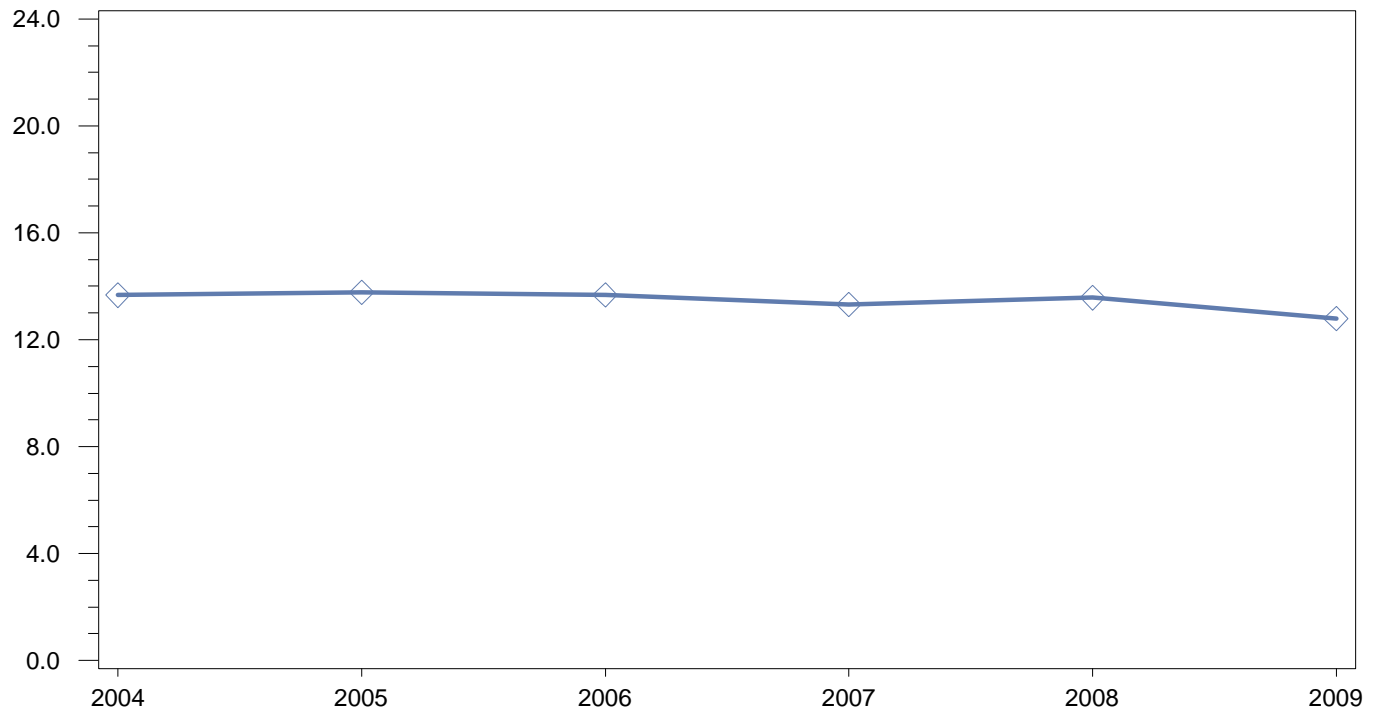
**Math: Mean Explore Score
Annual Percentage by Free/Reduced Lunch Status**



Area and Citywide Summary

		Year											
		2004		2005		2006		2007		2008		2009	
Free Reduced Lunch Status		N	MEAN	N	MEAN	N	MEAN	N	MEAN	N	MEAN	N	MEAN
No	City	4,305	15.9	4,486	15.8	4,620	15.9	4,707	15.9	6,286	15.0	4,349	15.7
	Area	747	13.6	730	14.2	687	13.9	502	14.0	471	13.8	428	13.7
	School	6	.	26	12.8	16	13.1	15	11.5	7	.	7	.
Yes	City	22,859	13.4	23,418	13.6	24,321	13.3	23,006	13.2	19,460	13.7	22,151	13.5
	Area	4,554	12.8	4,422	13.1	4,657	12.7	4,079	12.6	3,345	12.7	3,544	12.8
	School	377	11.8	405	11.6	485	11.6	400	11.2	264	11.0	259	11.3

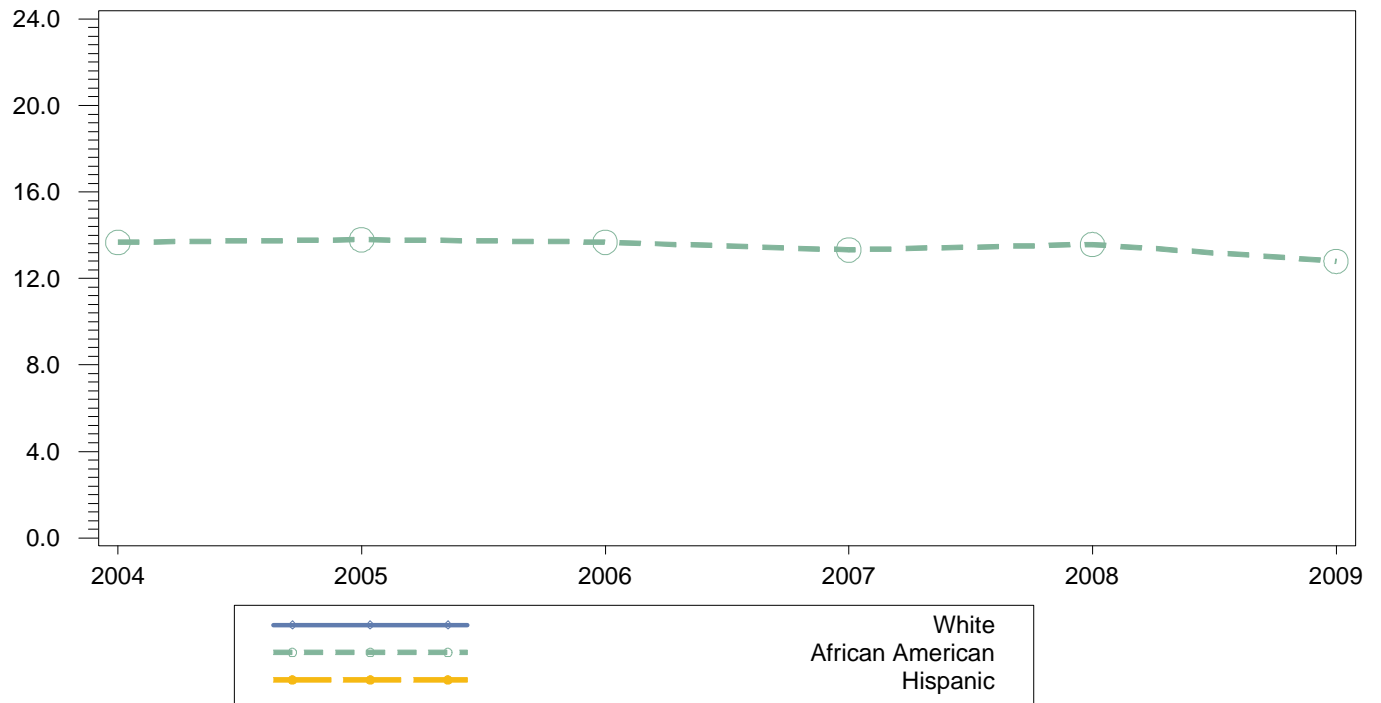
**Science: Mean Explore Score
Annual Percentage**



City, Area and School Summary

	Year											
	2004		2005		2006		2007		2008		2009	
	<i>N</i>	<i>MEAN</i>	<i>N</i>	<i>MEAN</i>	<i>N</i>	<i>MEAN</i>	<i>N</i>	<i>MEAN</i>	<i>N</i>	<i>MEAN</i>	<i>N</i>	<i>MEAN</i>
City	27,145	15.3	27,799	15.4	28,851	15.2	27,644	15.2	25,665	15.4	26,428	15.4
Area	5,305	14.8	5,130	14.9	5,321	14.7	4,566	14.7	3,796	14.7	3,955	14.5
School	382	13.7	423	13.8	501	13.7	415	13.3	270	13.6	263	12.8

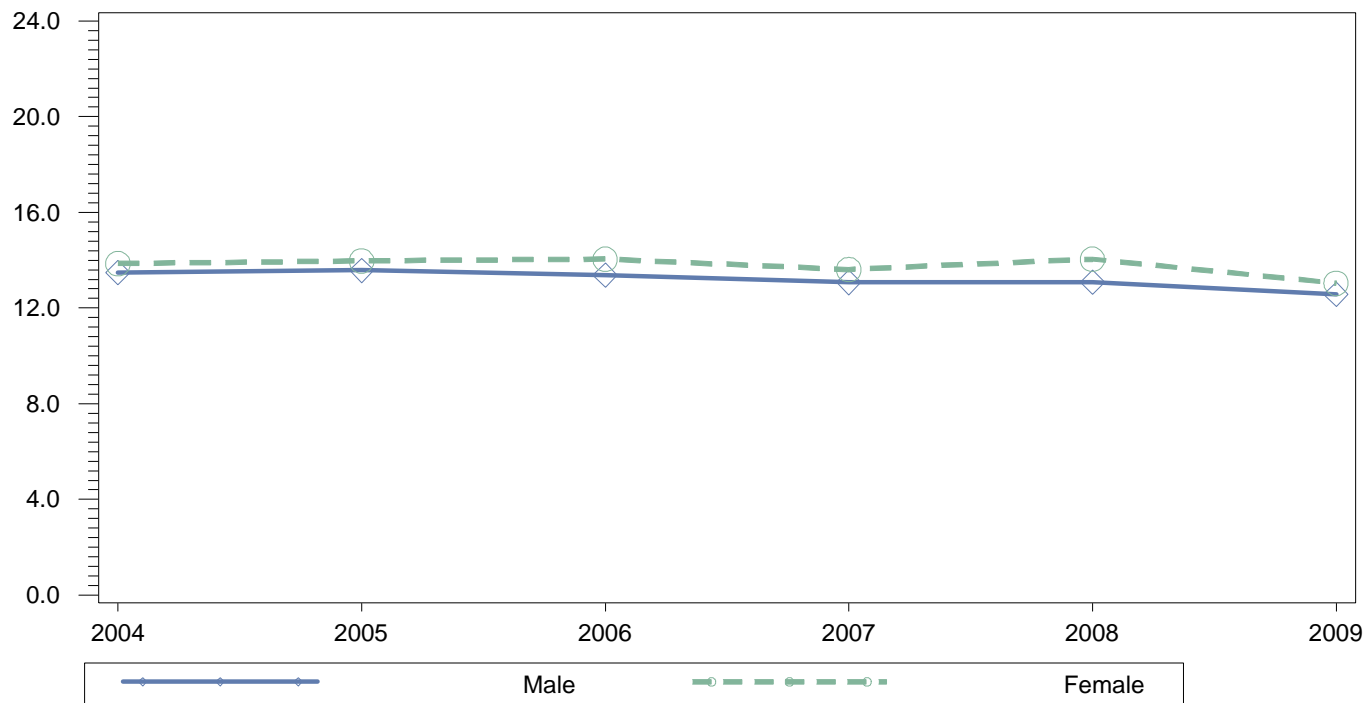
**Science: Mean Explore Score
Annual Percentage by Race**



Area and Citywide Summary

Race		Year											
		2004		2005		2006		2007		2008		2009	
		N	MEAN	N	MEAN	N	MEAN	N	MEAN	N	MEAN	N	MEAN
African American	City	14,592	14.8	14,625	14.9	14,969	14.7	14,342	14.7	12,811	14.8	13,048	14.9
	Area	4,712	14.7	4,483	14.9	4,787	14.6	3,980	14.6	3,342	14.6	3,388	14.5
	School	382	13.7	422	13.8	500	13.7	415	13.3	270	13.6	263	12.8
Asian	City	943	17.8	981	17.8	1,014	17.7	876	17.9	984	17.9	923	18.1
	Area	4	.	4	.	3	.	5	.	3	.	3	.
Hispanic	City	9,104	15.4	9,675	15.4	10,310	15.2	10,041	15.2	9,616	15.3	10,369	15.5
	Area	466	15.6	546	15.1	453	15.1	523	15.3	389	15.5	503	14.7
	School	.	.	1
White	City	2,462	17.4	2,471	17.4	2,512	17.2	2,349	17.3	2,192	17.4	2,048	17.7
	Area	118	15.6	95	15.6	71	15.4	55	15.1	58	15.0	59	14.9
	School	1

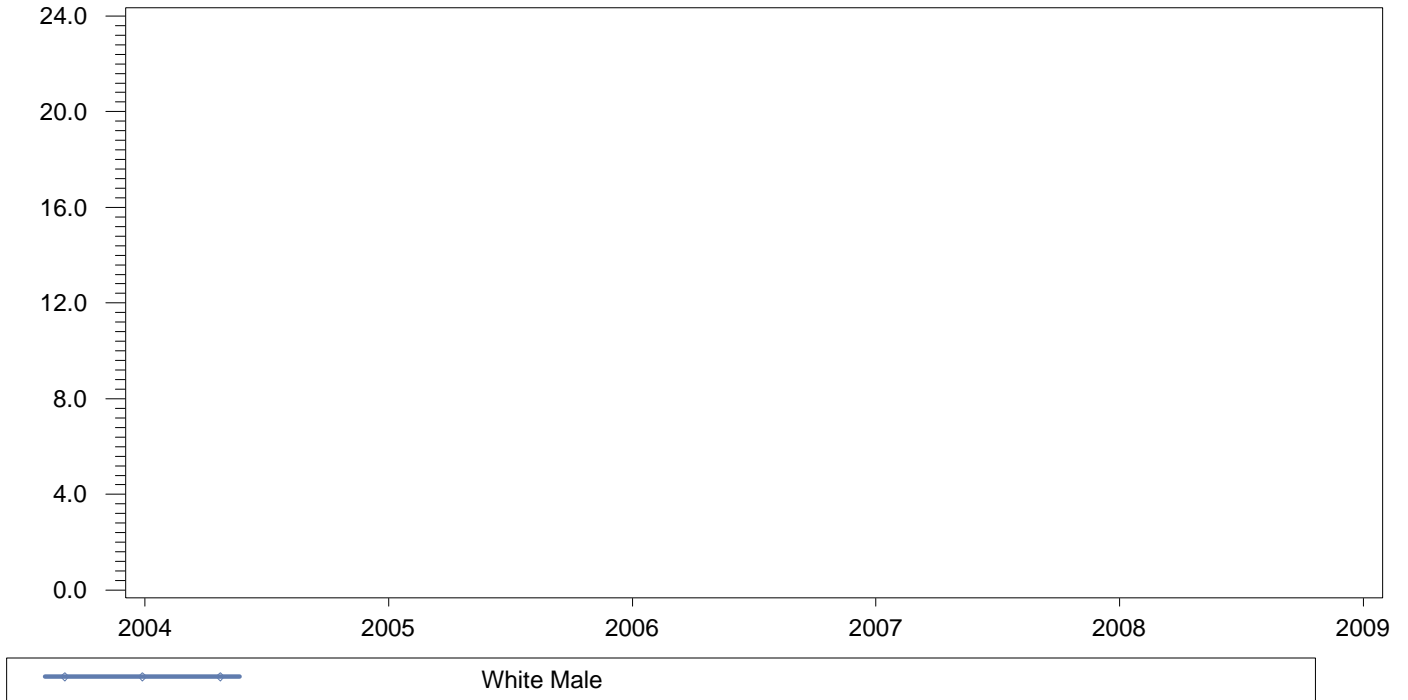
**Science: Mean Explore Score
Annual Percentage by Gender**



Area and Citywide Summary

Gender		Year											
		2004		2005		2006		2007		2008		2009	
		N	MEAN	N	MEAN	N	MEAN	N	MEAN	N	MEAN	N	MEAN
Female	City	13,933	15.6	14,133	15.7	14,622	15.5	13,945	15.5	13,093	15.6	13,348	15.7
	Area	2,836	15.1	2,664	15.3	2,753	15.0	2,349	15.0	1,989	15.1	2,008	14.9
	School	192	13.9	218	14.0	223	14.0	194	13.6	138	14.0	126	13.0
Male	City	13,209	15.0	13,662	15.1	14,229	15.0	13,699	15.0	12,572	15.1	13,080	15.1
	Area	2,469	14.5	2,466	14.5	2,568	14.3	2,217	14.4	1,807	14.4	1,947	14.1
	School	190	13.5	205	13.6	278	13.4	221	13.1	132	13.1	137	12.6

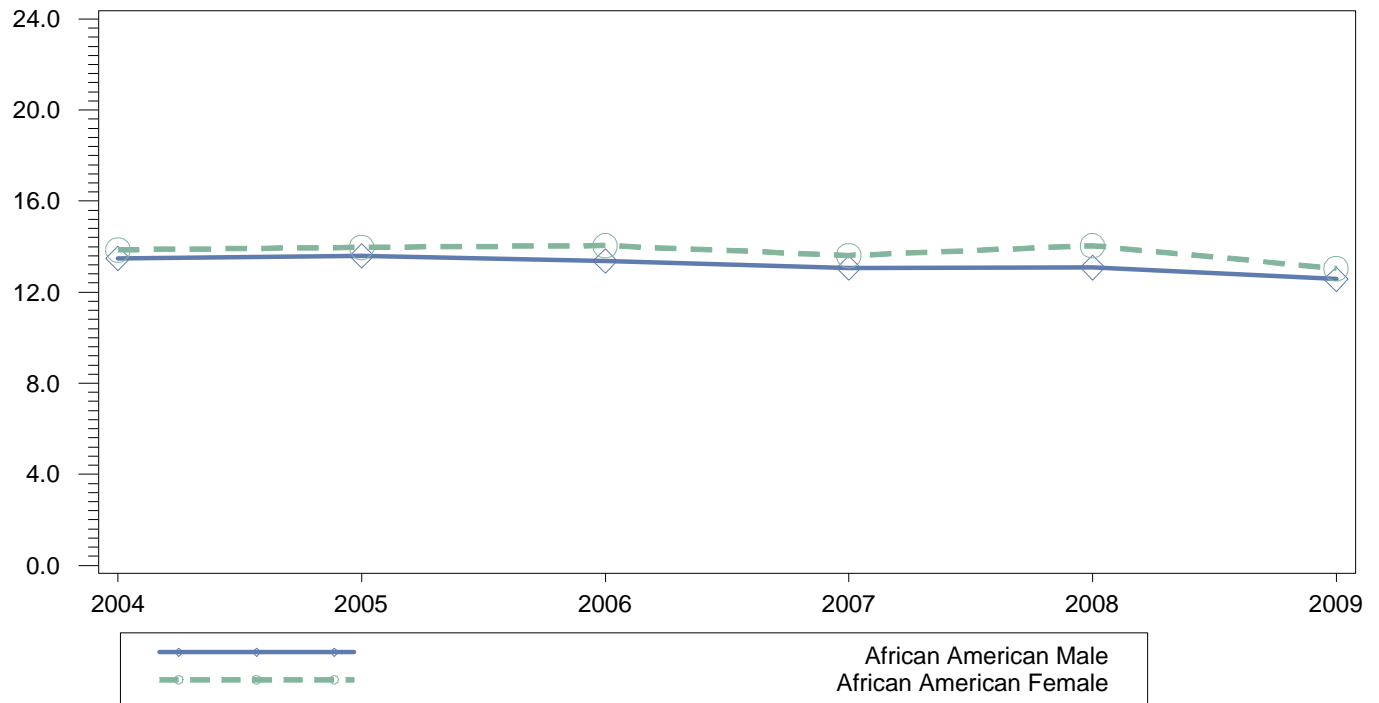
**Science: Mean Explore Score
Annual Percentage by Gender for Race = White**



Area and Citywide Summary

		Year											
		2004		2005		2006		2007		2008		2009	
<i>Gender for Race = White</i>		<i>N</i>	<i>MEAN</i>	<i>N</i>	<i>MEAN</i>	<i>N</i>	<i>MEAN</i>	<i>N</i>	<i>MEAN</i>	<i>N</i>	<i>MEAN</i>	<i>N</i>	<i>MEAN</i>
White Female	City	1,214	17.7	1,240	17.7	1,203	17.4	1,177	17.6	1,095	17.7	1,023	17.9
	Area	58	15.8	39	16.4	31	16.0	32	15.6	25	15.7	24	15.7
White Male	City	1,248	17.2	1,231	17.2	1,309	17.0	1,172	16.9	1,097	17.1	1,025	17.4
	Area	60	15.5	56	15.0	40	15.0	23	14.4	33	14.5	35	14.3
	School	1

**Science: Mean Explore Score
Annual Percentage by Gender for Race = African American**



Area and Citywide Summary

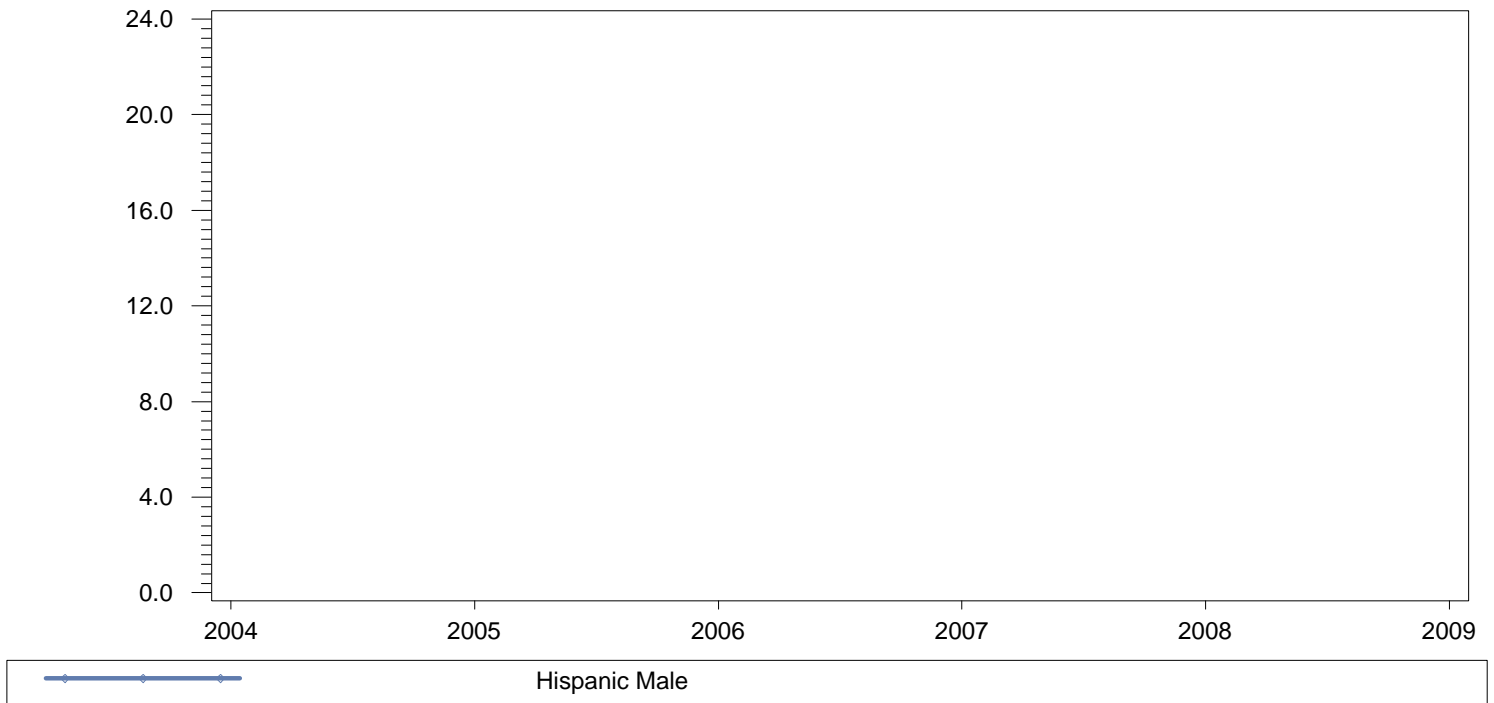
Gender for Race = African American		Year											
		2004		2005		2006		2007		2008		2009	
		N	MEAN	N	MEAN	N	MEAN	N	MEAN	N	MEAN	N	MEAN
African American Female	City	7,669	15.1	7,594	15.3	7,831	15.1	7,322	15.0	6,666	15.1	6,675	15.2
	Area	2,552	15.0	2,353	15.3	2,488	15.0	2,043	14.9	1,759	15.0	1,735	14.9
	School	192	13.9	218	14.0	223	14.0	194	13.6	138	14.0	126	13.0
African American Male	City	6,923	14.4	7,031	14.5	7,138	14.4	7,020	14.4	6,145	14.5	6,373	14.5
	Area	2,160	14.3	2,130	14.5	2,299	14.3	1,937	14.3	1,583	14.2	1,653	14.1
	School	190	13.5	204	13.6	277	13.4	221	13.1	132	13.1	137	12.6

**Science: Mean Explore Score
Annual Percentage by Gender for Race = Asian**

Area and Citywide Summary

		Year											
		2004		2005		2006		2007		2008		2009	
<i>Gender for Race = Asian</i>		<i>N</i>	<i>MEAN</i>	<i>N</i>	<i>MEAN</i>	<i>N</i>	<i>MEAN</i>	<i>N</i>	<i>MEAN</i>	<i>N</i>	<i>MEAN</i>	<i>N</i>	<i>MEAN</i>
Asian Female	City	486	17.8	505	17.8	478	17.9	444	17.9	477	17.9	444	18.2
	Area	2	.	2	.	2	.	2	.	.	.	1	.
Asian Male	City	457	17.7	476	17.7	536	17.5	432	17.8	507	17.9	479	18.0
	Area	2	.	2	.	1	.	3	.	3	.	2	.

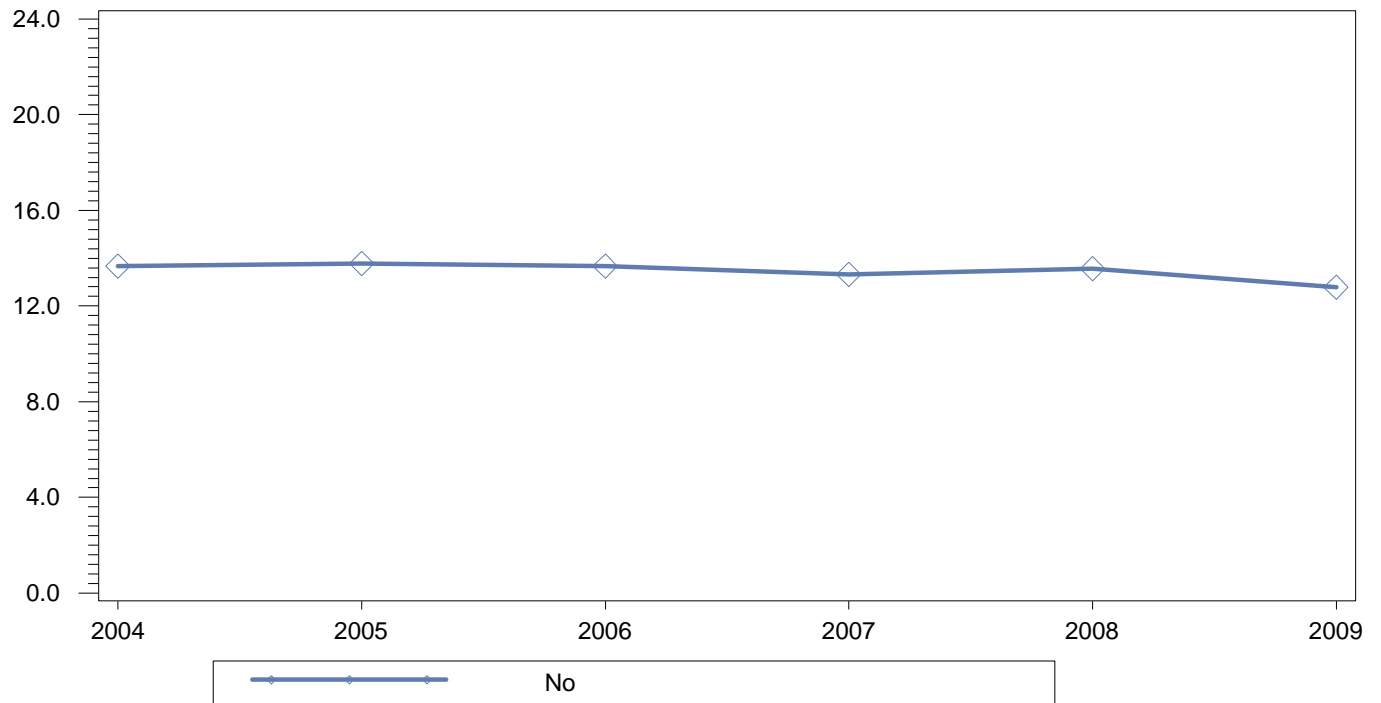
**Science: Mean Explore Score
Annual Percentage by Gender for Race = Hispanic**



Area and Citywide Summary

		Year											
		2004		2005		2006		2007		2008		2009	
<i>Gender for Race = Hispanic</i>		<i>N</i>	<i>MEAN</i>	<i>N</i>	<i>MEAN</i>	<i>N</i>	<i>MEAN</i>	<i>N</i>	<i>MEAN</i>	<i>N</i>	<i>MEAN</i>	<i>N</i>	<i>MEAN</i>
Hispanic Female	City	4,536	15.6	4,770	15.6	5,084	15.4	4,980	15.4	4,817	15.5	5,187	15.7
	Area	220	15.6	268	15.4	227	15.3	271	15.5	203	15.6	247	15.1
Hispanic Male	City	4,568	15.2	4,905	15.2	5,226	15.1	5,061	15.1	4,799	15.2	5,182	15.3
	Area	246	15.5	278	14.7	226	14.9	252	15.2	186	15.4	256	14.3
	School	.	.	1

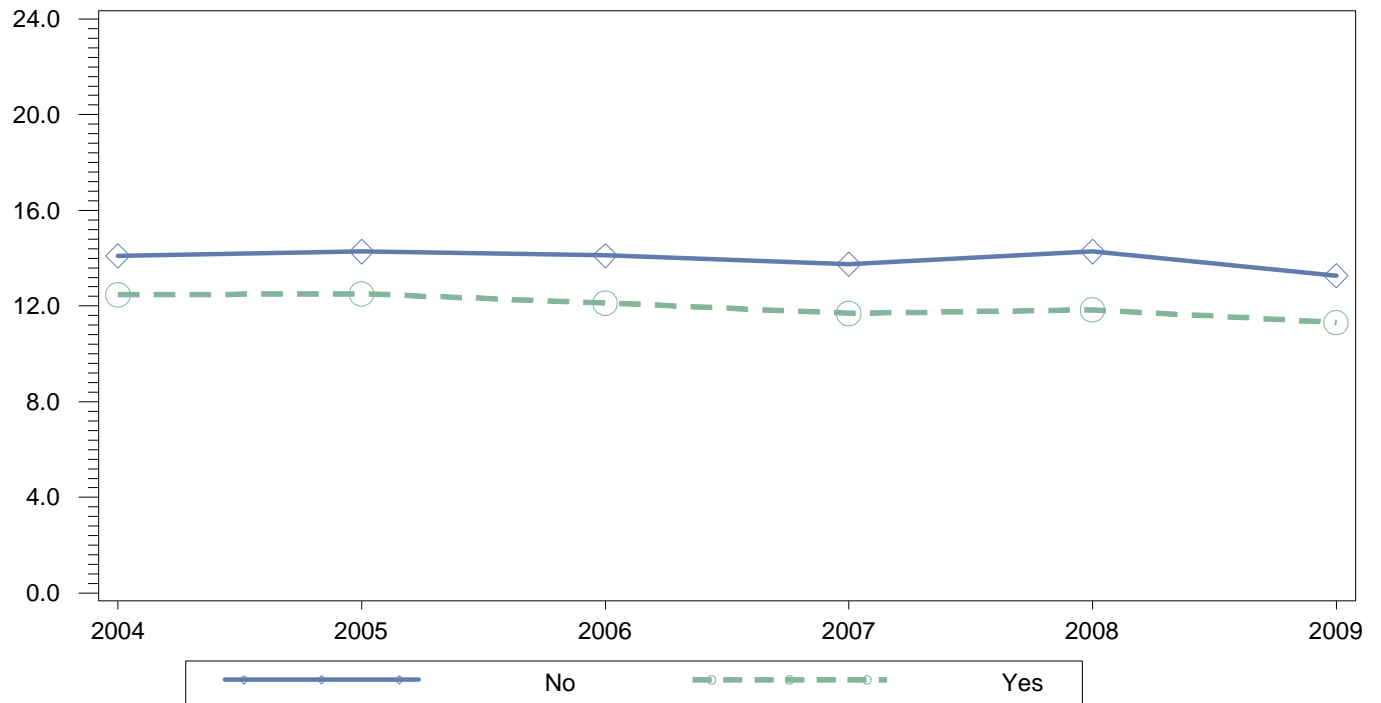
**Science: Mean Explore Score
Annual Percentage by English Language Learner Status**



Area and Citywide Summary

English Language Learner Status	Year											
	2004		2005		2006		2007		2008		2009	
	N	MEAN	N	MEAN	N	MEAN	N	MEAN	N	MEAN	N	MEAN
No City	26,216	15.4	26,747	15.5	27,741	15.3	26,594	15.3	24,523	15.4	25,337	15.5
Area	5,288	14.8	5,103	14.9	5,300	14.7	4,526	14.7	3,755	14.7	3,913	14.5
School	382	13.7	423	13.8	501	13.7	415	13.3	270	13.6	263	12.8
Yes City	929	13.7	1,052	13.5	1,110	13.5	1,050	13.4	1,142	13.7	1,091	13.6
Area	17	13.8	27	12.6	21	13.8	40	14.2	41	14.5	42	12.7

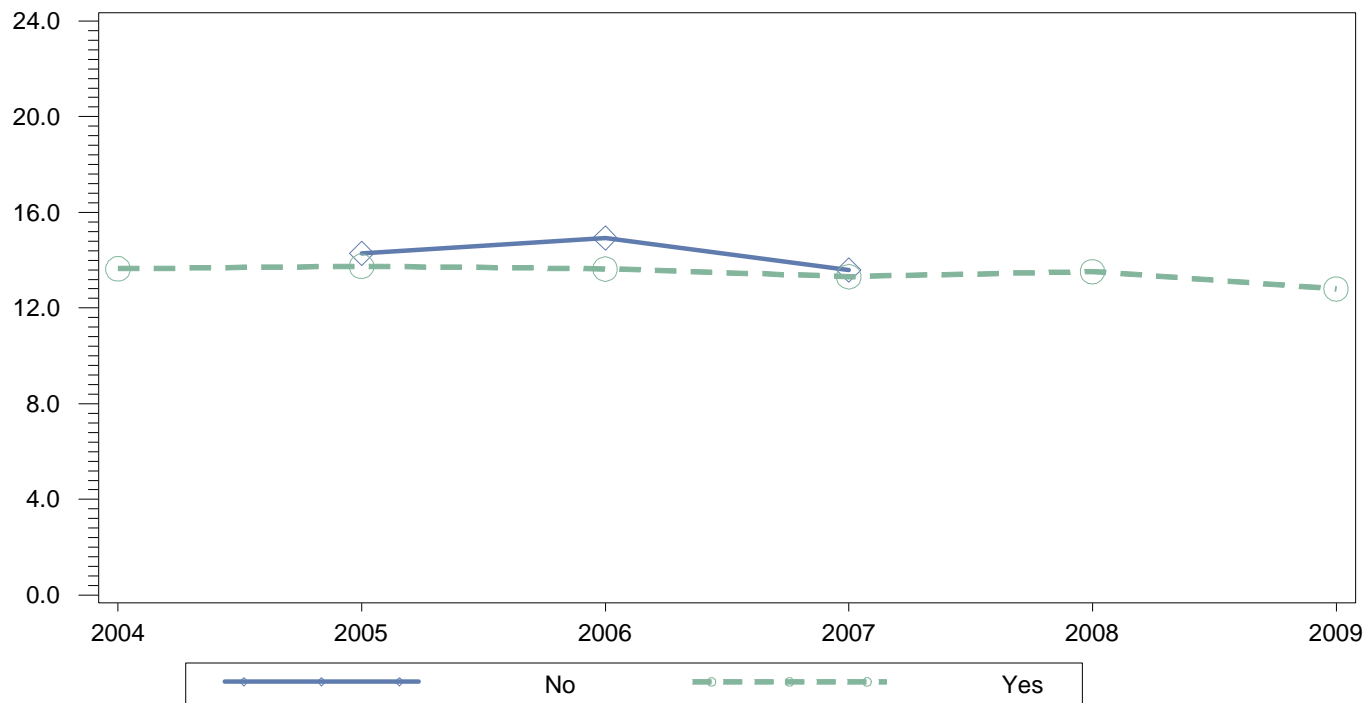
**Science: Mean Explore Score
Annual Percentage by Individualized Education expl Status**



Area and Citywide Summary

		Year											
		2004		2005		2006		2007		2008		2009	
Individualized Education expl Status		N	MEAN	N	MEAN	N	MEAN	N	MEAN	N	MEAN	N	MEAN
No	City	23,687	15.7	24,380	15.7	25,383	15.5	24,343	15.5	22,756	15.7	23,751	15.7
	Area	4,592	15.1	4,450	15.3	4,630	15.0	4,050	15.0	3,305	15.1	3,450	14.8
	School	281	14.1	304	14.3	391	14.1	330	13.7	192	14.3	199	13.3
Yes	City	3,458	12.9	3,419	13.1	3,468	13.0	3,301	12.9	2,909	12.8	2,677	12.9
	Area	713	12.7	680	12.8	691	12.7	516	12.4	491	12.4	505	12.4
	School	101	12.5	119	12.5	110	12.1	85	11.7	78	11.8	64	11.3

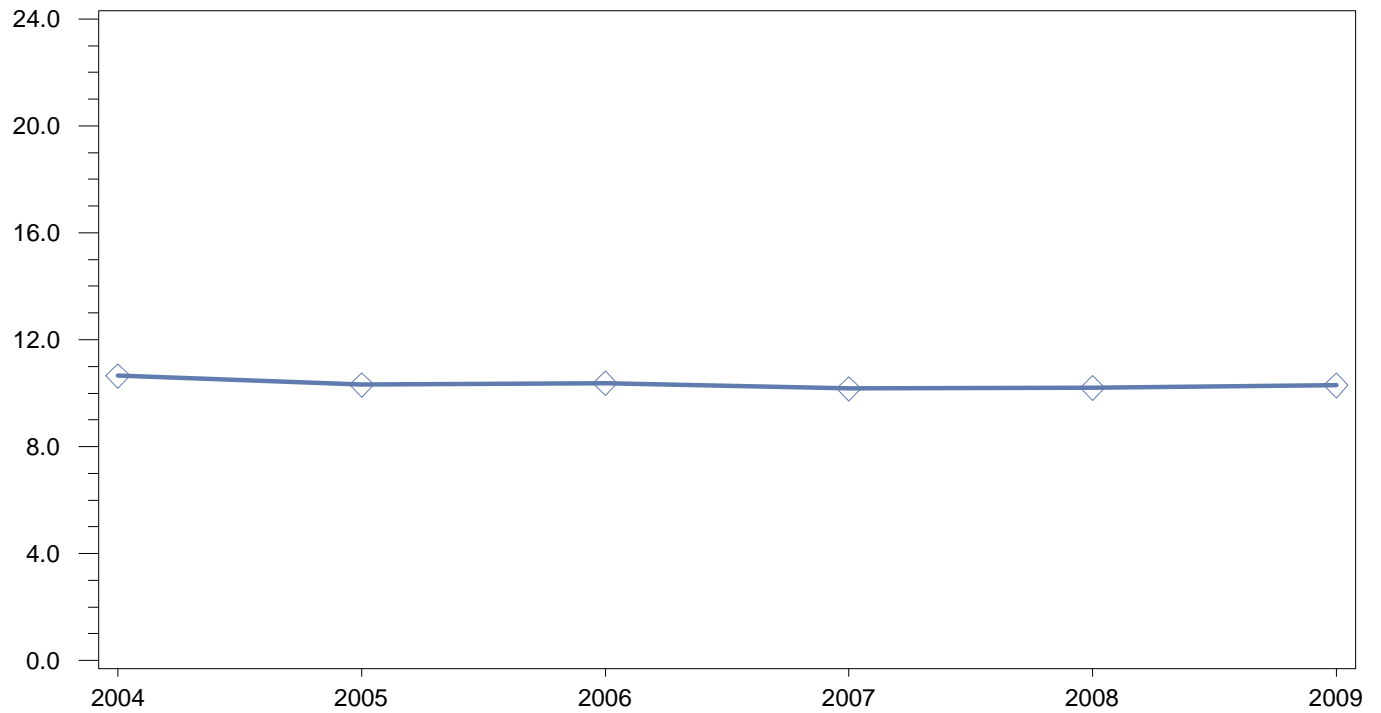
**Science: Mean Explore Score
Annual Percentage by Free/Reduced Lunch Status**



Area and Citywide Summary

		Year											
		2004		2005		2006		2007		2008		2009	
Free Reduced Lunch Status		N	MEAN	N	MEAN	N	MEAN	N	MEAN	N	MEAN	N	MEAN
No	City	4,288	16.9	4,458	16.8	4,591	16.8	4,690	16.8	6,247	16.1	4,337	16.9
	Area	746	15.4	728	15.6	683	15.4	497	15.5	470	15.2	426	15.0
	School	6	.	24	14.3	16	14.9	15	13.6	7	.	7	.
Yes	City	22,857	15.0	23,341	15.2	24,260	15.0	22,954	14.9	19,418	15.1	22,091	15.2
	Area	4,559	14.7	4,402	14.8	4,638	14.6	4,069	14.6	3,326	14.7	3,529	14.5
	School	376	13.6	399	13.7	485	13.6	400	13.3	263	13.5	256	12.8

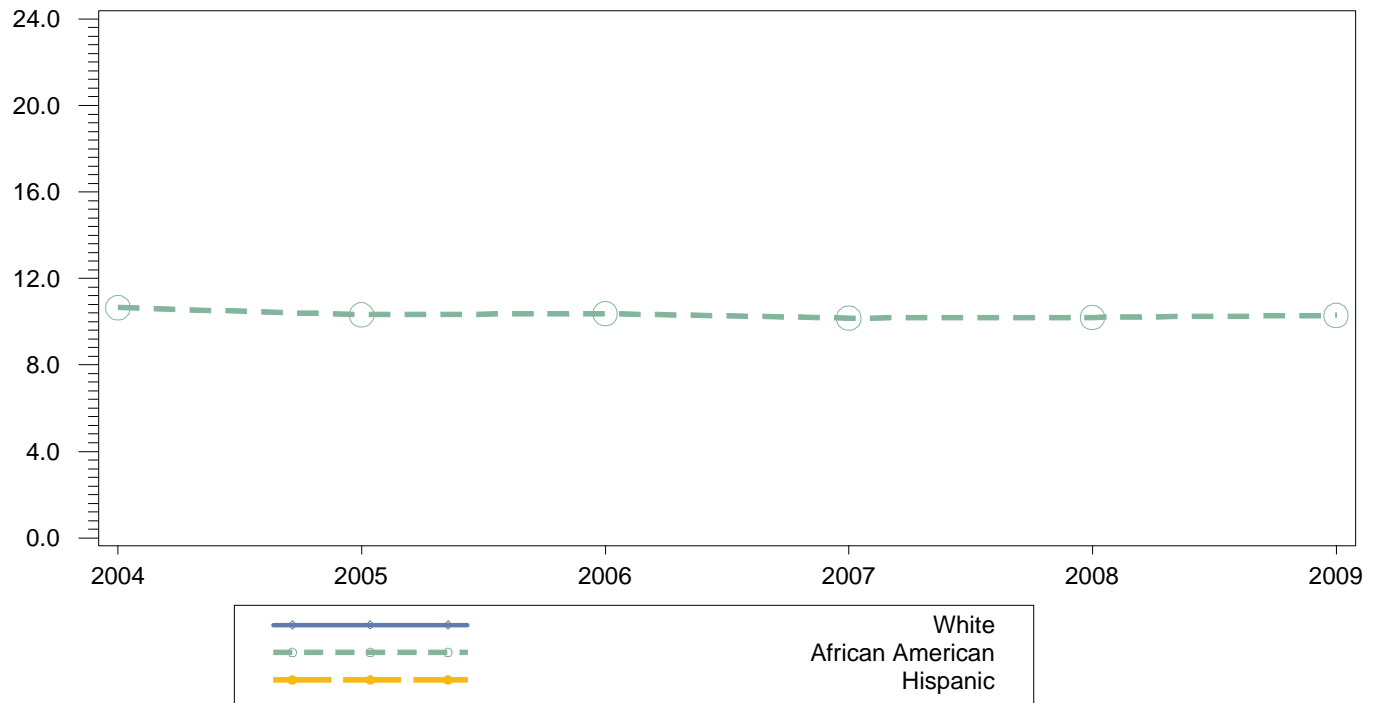
**English: Mean Explore Score
Annual Percentage**



City, Area and School Summary

	Year											
	2004		2005		2006		2007		2008		2009	
	<i>N</i>	<i>MEAN</i>	<i>N</i>	<i>MEAN</i>	<i>N</i>	<i>MEAN</i>	<i>N</i>	<i>MEAN</i>	<i>N</i>	<i>MEAN</i>	<i>N</i>	<i>MEAN</i>
City	27,175	13.1	27,841	13.1	28,950	13.0	27,677	13.0	25,714	13.2	26,480	13.1
Area	5,300	12.5	5,152	12.6	5,349	12.3	4,581	12.3	3,818	12.4	3,979	12.2
School	383	10.7	431	10.3	501	10.4	414	10.2	271	10.2	266	10.3

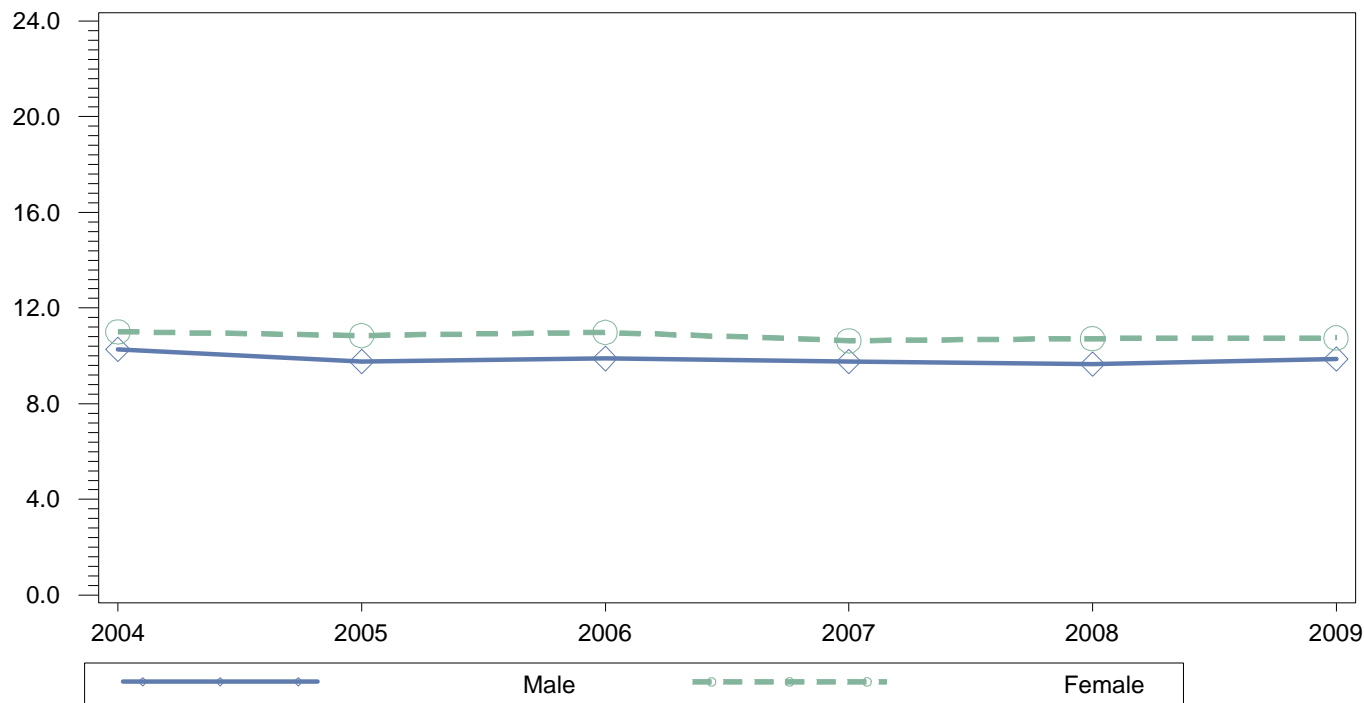
**English: Mean Explore Score
Annual Percentage by Race**



Area and Citywide Summary

Race		Year											
		2004		2005		2006		2007		2008		2009	
		N	MEAN	N	MEAN	N	MEAN	N	MEAN	N	MEAN	N	MEAN
African American	City	14,612	12.5	14,645	12.5	15,052	12.4	14,363	12.2	12,847	12.5	13,094	12.4
	Area	4,706	12.4	4,504	12.6	4,813	12.2	3,994	12.1	3,363	12.3	3,412	12.1
	School	383	10.7	430	10.3	500	10.4	414	10.2	271	10.2	266	10.3
Asian	City	942	16.0	981	15.9	1,011	15.8	877	16.3	982	16.5	925	16.1
	Area	4	.	4	.	3	.	5	.	3	.	3	.
Hispanic	City	9,114	13.1	9,690	13.0	10,331	13.0	10,048	12.9	9,628	13.0	10,371	13.0
	Area	468	13.0	547	12.8	454	13.1	524	13.1	390	12.9	503	12.4
	School	.	.	1
White	City	2,463	16.3	2,478	16.4	2,509	16.2	2,354	16.3	2,195	16.6	2,050	16.6
	Area	117	13.7	95	13.9	72	13.4	55	13.3	58	13.2	59	13.7
	School	1

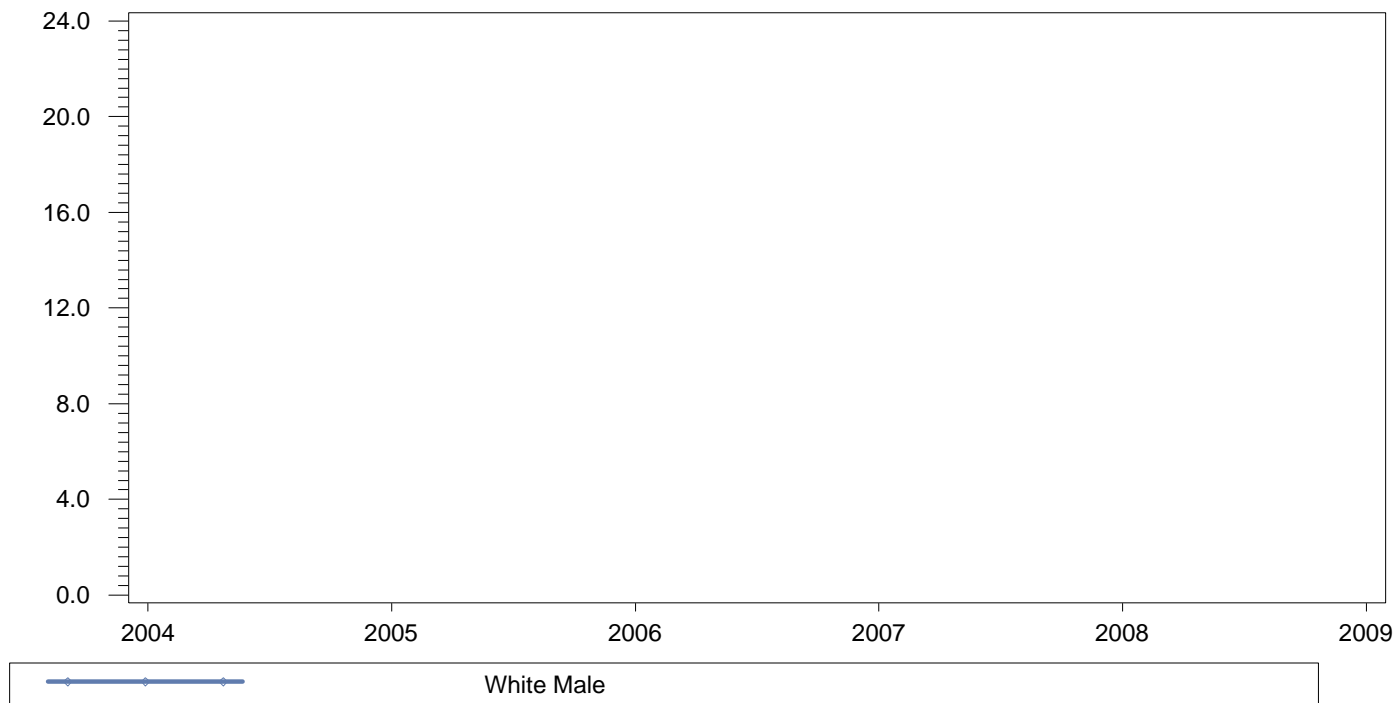
**English: Mean Explore Score
Annual Percentage by Gender**



Area and Citywide Summary

Gender		Year											
		2004		2005		2006		2007		2008		2009	
		N	MEAN	N	MEAN	N	MEAN	N	MEAN	N	MEAN	N	MEAN
Female	City	13,920	13.6	14,145	13.6	14,640	13.5	13,949	13.4	13,076	13.6	13,368	13.6
	Area	2,833	13.0	2,667	13.2	2,759	12.9	2,357	12.7	1,998	12.8	2,012	12.7
	School	193	11.0	218	10.9	223	11.0	194	10.6	138	10.7	126	10.8
Male	City	13,252	12.6	13,692	12.6	14,310	12.6	13,728	12.5	12,638	12.7	13,112	12.6
	Area	2,467	11.9	2,485	12.0	2,590	11.7	2,224	11.8	1,820	11.9	1,967	11.6
	School	190	10.3	213	9.8	278	9.9	220	9.8	133	9.7	140	9.9

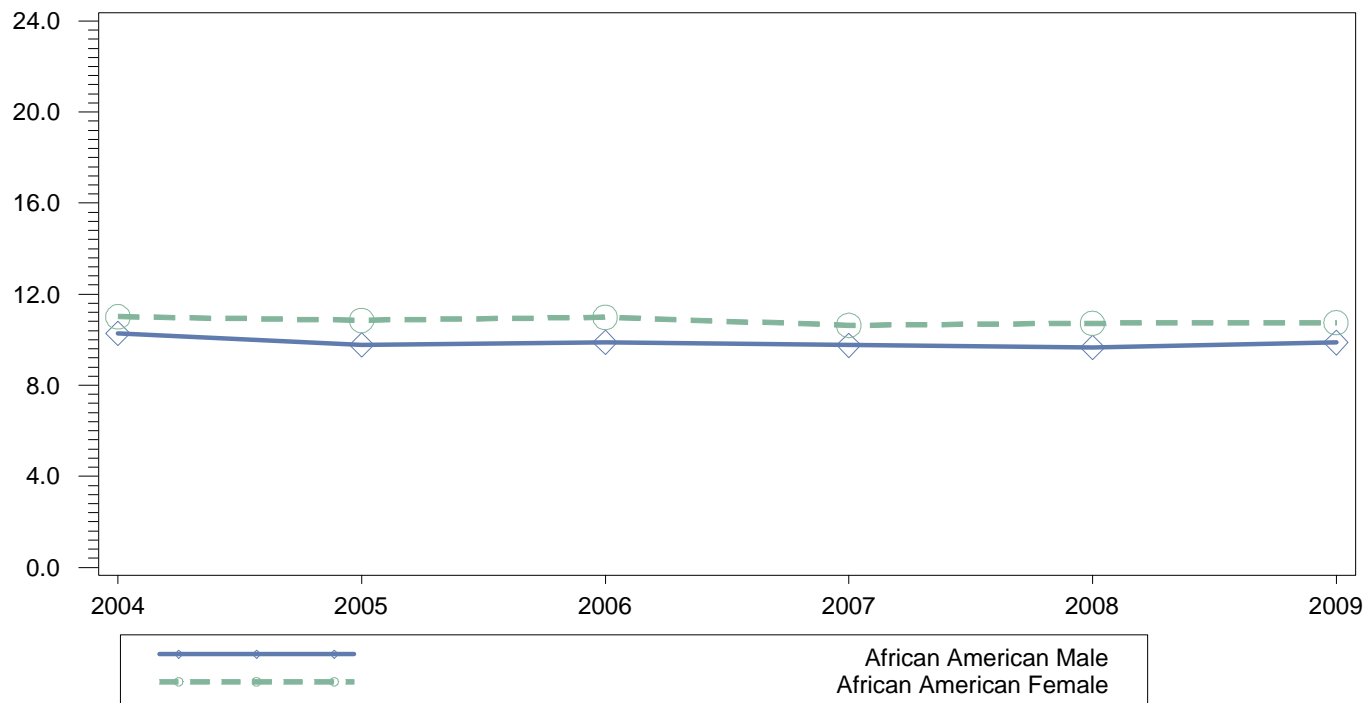
**English: Mean Explore Score
Annual Percentage by Gender for Race = White**



Area and Citywide Summary

		Year											
		2004		2005		2006		2007		2008		2009	
<i>Gender for Race = White</i>		<i>N</i>	<i>MEAN</i>	<i>N</i>	<i>MEAN</i>	<i>N</i>	<i>MEAN</i>	<i>N</i>	<i>MEAN</i>	<i>N</i>	<i>MEAN</i>	<i>N</i>	<i>MEAN</i>
White Female	City	1,212	16.9	1,242	17.0	1,202	16.8	1,178	16.9	1,096	17.3	1,024	17.3
	Area	57	14.6	39	14.4	31	13.9	32	13.3	25	13.6	24	15.1
White Male	City	1,251	15.6	1,236	15.8	1,307	15.6	1,176	15.6	1,099	15.9	1,026	15.9
	Area	60	12.8	56	13.6	41	13.0	23	13.3	33	12.8	35	12.7
	School	1

**English: Mean Explore Score
Annual Percentage by Gender for Race = African American**



Area and Citywide Summary

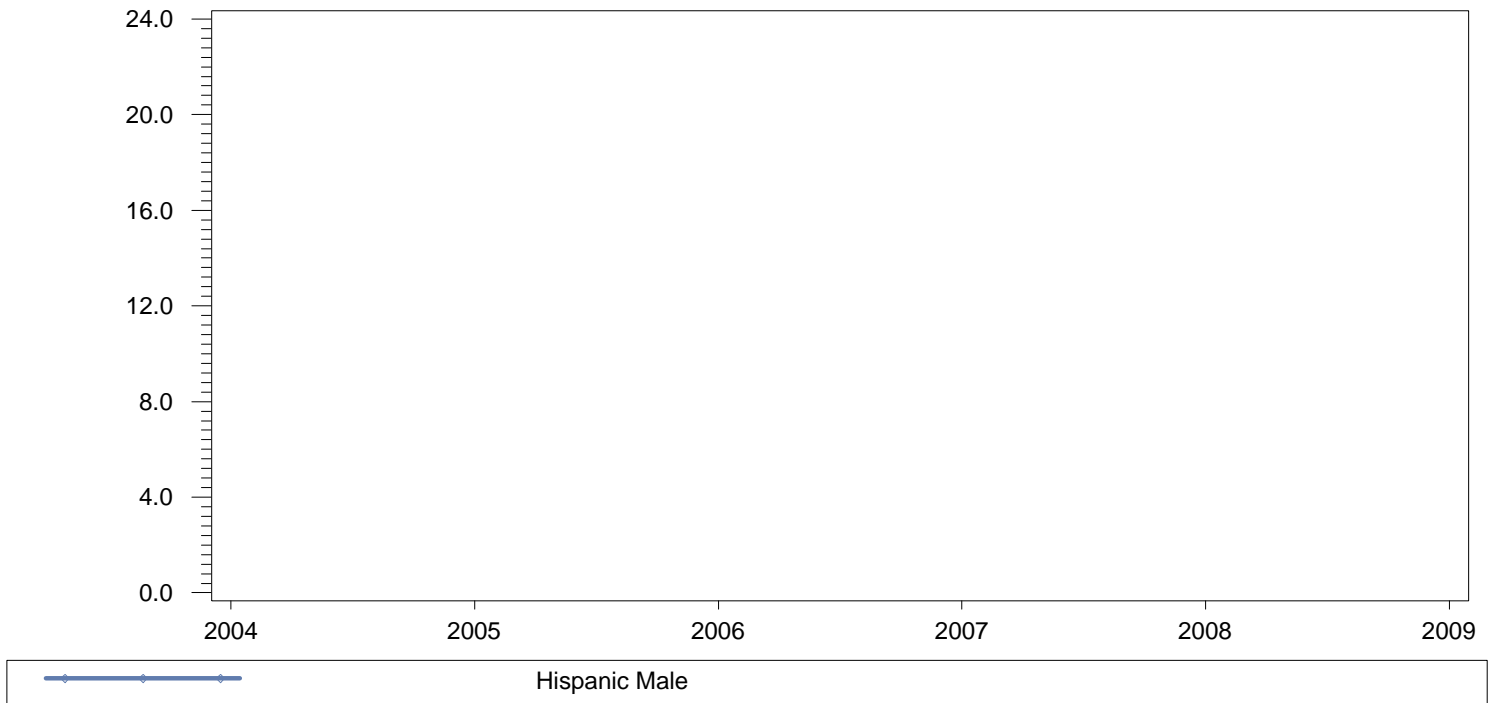
Gender for Race = African American		Year											
		2004		2005		2006		2007		2008		2009	
		N	MEAN	N	MEAN	N	MEAN	N	MEAN	N	MEAN	N	MEAN
African American Female	City	7,661	13.0	7,603	13.1	7,843	12.9	7,324	12.7	6,650	13.0	6,695	13.0
	Area	2,549	13.0	2,356	13.2	2,494	12.8	2,051	12.6	1,767	12.8	1,739	12.7
	School	193	11.0	218	10.9	223	11.0	194	10.6	138	10.7	126	10.8
African American Male	City	6,951	11.8	7,042	11.9	7,209	11.8	7,039	11.7	6,197	11.9	6,399	11.8
	Area	2,157	11.8	2,148	11.9	2,319	11.6	1,943	11.6	1,596	11.7	1,673	11.5
	School	190	10.3	212	9.8	277	9.9	220	9.8	133	9.7	140	9.9

**English: Mean Explore Score
Annual Percentage by Gender for Race = Asian**

Area and Citywide Summary

		Year											
		2004		2005		2006		2007		2008		2009	
<i>Gender for Race = Asian</i>		<i>N</i>	<i>MEAN</i>	<i>N</i>	<i>MEAN</i>	<i>N</i>	<i>MEAN</i>	<i>N</i>	<i>MEAN</i>	<i>N</i>	<i>MEAN</i>	<i>N</i>	<i>MEAN</i>
Asian Female	City	485	16.2	505	16.2	477	16.3	444	16.6	476	16.7	445	16.8
	Area	2	.	2	.	2	.	2	.	.	.	1	.
Asian Male	City	457	15.8	476	15.7	534	15.4	433	16.0	506	16.4	480	15.5
	Area	2	.	2	.	1	.	3	.	3	.	2	.

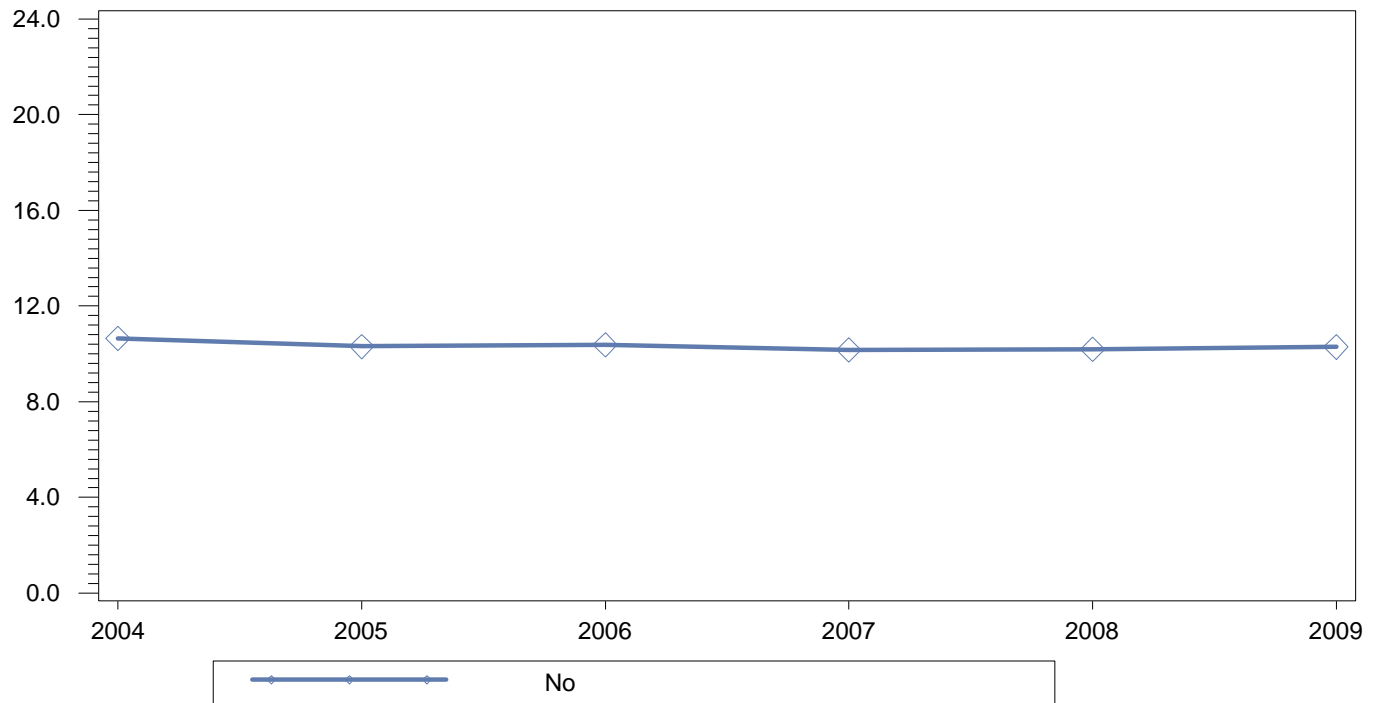
**English: Mean Explore Score
Annual Percentage by Gender for Race = Hispanic**



Area and Citywide Summary

		Year											
		2004		2005		2006		2007		2008		2009	
<i>Gender for Race = Hispanic</i>		<i>N</i>	<i>MEAN</i>	<i>N</i>	<i>MEAN</i>	<i>N</i>	<i>MEAN</i>	<i>N</i>	<i>MEAN</i>	<i>N</i>	<i>MEAN</i>	<i>N</i>	<i>MEAN</i>
Hispanic Female	City	4,534	13.5	4,771	13.4	5,091	13.3	4,981	13.2	4,816	13.4	5,185	13.4
	Area	221	13.5	268	13.4	227	13.5	271	13.2	204	13.1	247	13.0
Hispanic Male	City	4,580	12.7	4,919	12.6	5,240	12.7	5,067	12.7	4,812	12.7	5,186	12.6
	Area	247	12.7	279	12.2	227	12.7	253	13.0	186	12.8	256	11.9
	School	.	.	1

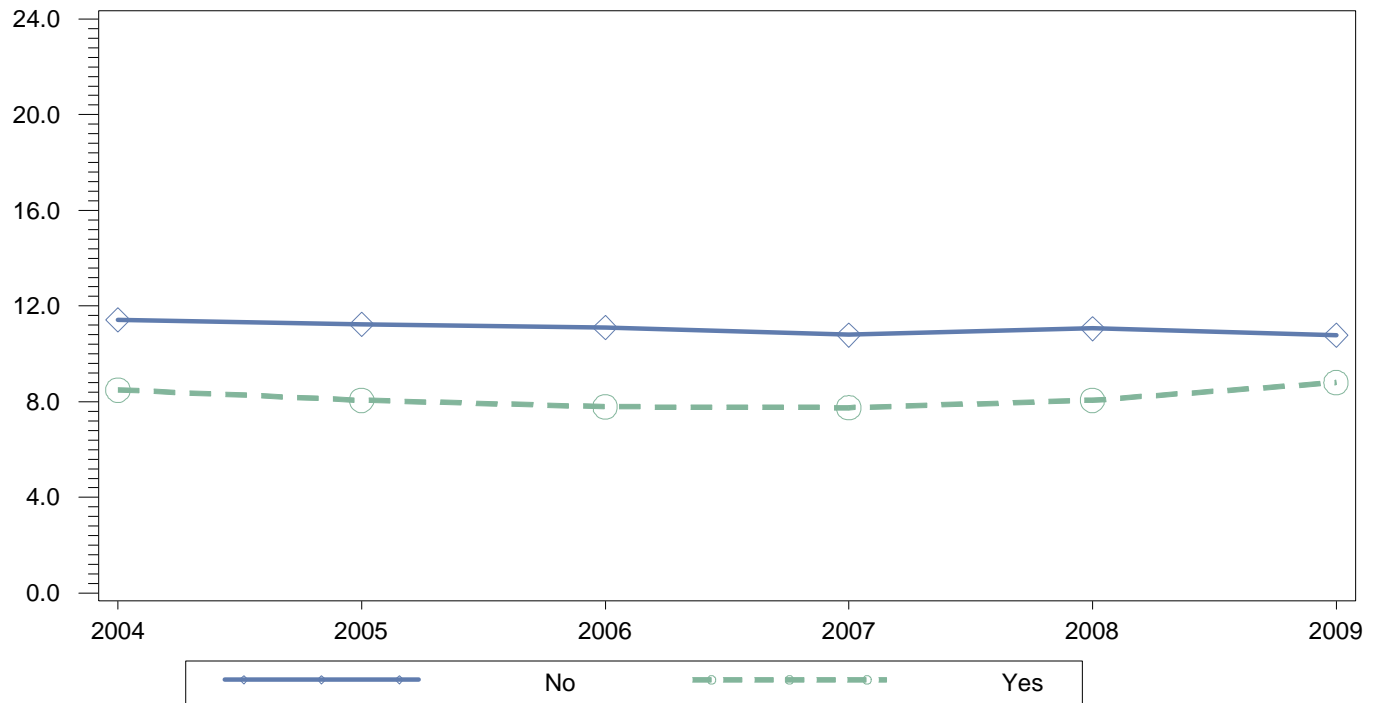
**English: Mean Explore Score
Annual Percentage by English Language Learner Status**



Area and Citywide Summary

		Year											
		2004		2005		2006		2007		2008		2009	
English Language Learner Status		N	MEAN	N	MEAN	N	MEAN	N	MEAN	N	MEAN	N	MEAN
No	City	26,242	13.2	26,785	13.3	27,837	13.2	26,623	13.1	24,573	13.3	25,388	13.2
	Area	5,282	12.5	5,124	12.6	5,328	12.3	4,541	12.3	3,777	12.4	3,937	12.2
	School	383	10.7	431	10.3	501	10.4	414	10.2	271	10.2	266	10.3
Yes	City	933	10.0	1,056	9.9	1,113	9.8	1,054	9.7	1,141	10.1	1,092	9.7
	Area	18	10.7	28	10.3	21	10.8	40	10.7	41	10.6	42	9.3

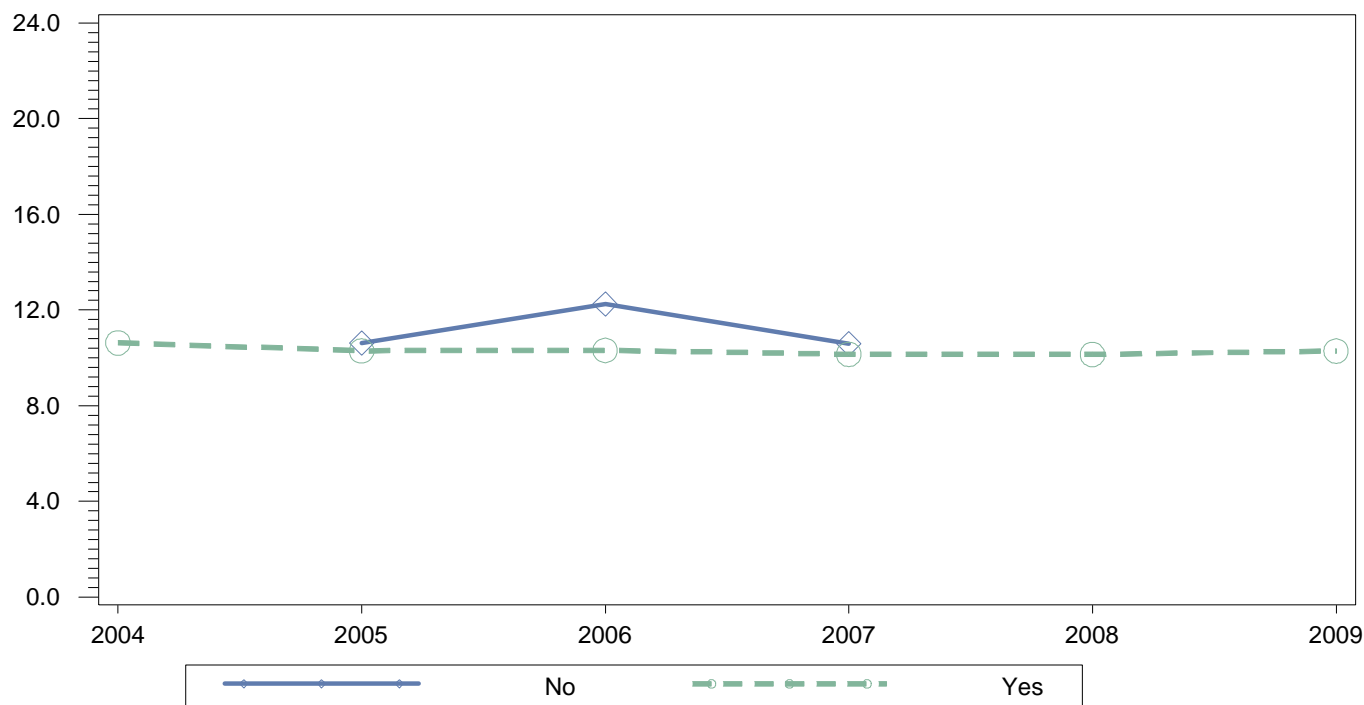
**English: Mean Explore Score
Annual Percentage by Individualized Education expl Status**



Area and Citywide Summary

		Year											
		2004		2005		2006		2007		2008		2009	
Individualized Education expl Status		N	MEAN	N	MEAN	N	MEAN	N	MEAN	N	MEAN	N	MEAN
No	City	23,683	13.7	24,397	13.7	25,433	13.5	24,338	13.4	22,769	13.7	23,768	13.5
	Area	4,581	13.1	4,463	13.2	4,648	12.8	4,059	12.7	3,321	12.9	3,467	12.6
	School	281	11.4	305	11.2	391	11.1	329	10.8	193	11.1	200	10.8
Yes	City	3,492	9.4	3,444	9.4	3,517	9.5	3,339	9.4	2,945	9.3	2,712	9.7
	Area	719	9.1	689	9.2	701	8.9	522	8.7	497	8.8	512	9.3
	School	102	8.5	126	8.1	110	7.8	85	7.8	78	8.1	66	8.8

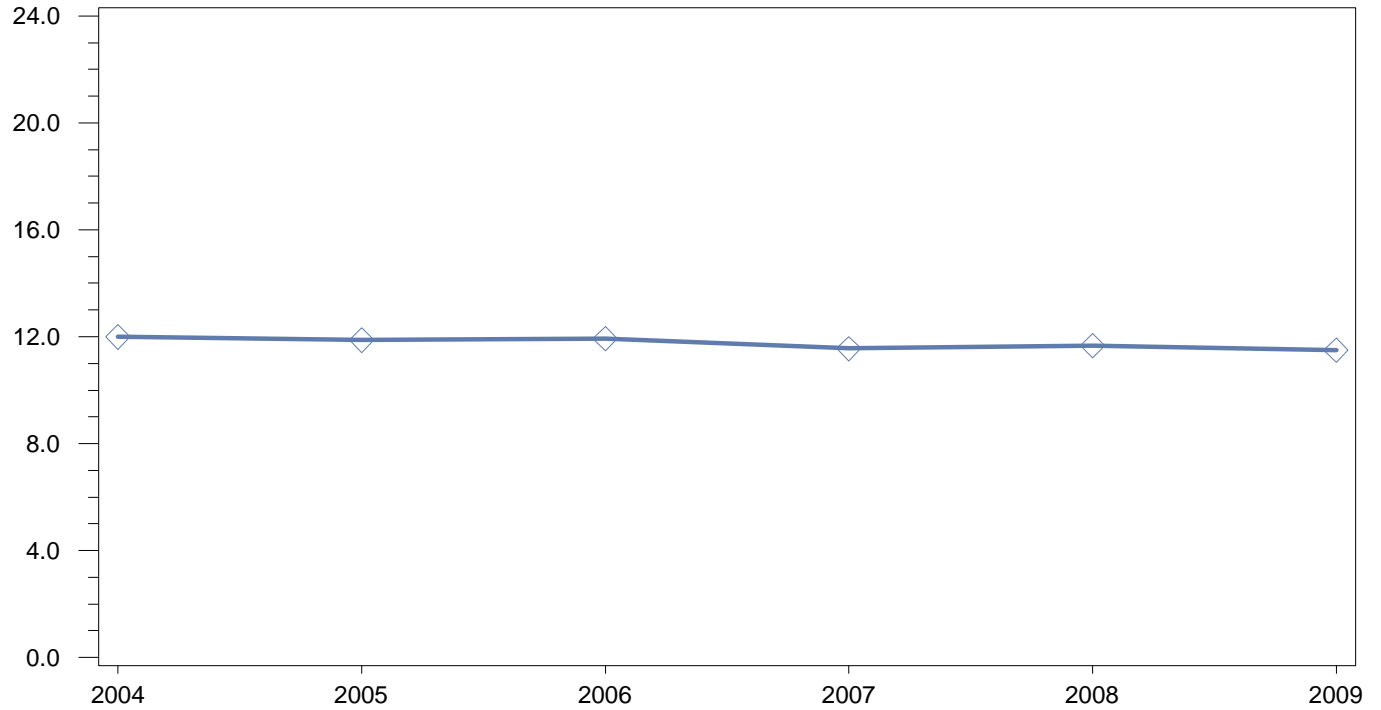
**English: Mean Explore Score
Annual Percentage by Free/Reduced Lunch Status**



Area and Citywide Summary

		Year											
		2004		2005		2006		2007		2008		2009	
Free Reduced Lunch Status		N	MEAN	N	MEAN	N	MEAN	N	MEAN	N	MEAN	N	MEAN
		No	City	4,313	15.6	4,492	15.4	4,622	15.5	4,707	15.5	6,289	14.5
Area	747		13.5	730	13.7	688	13.7	503	13.6	472	13.8	429	13.2
School	6		.	26	10.6	16	12.3	15	10.6	7	.	7	.
Yes	City	22,862	12.7	23,349	12.7	24,328	12.6	22,970	12.4	19,425	12.8	22,129	12.6
	Area	4,553	12.4	4,422	12.4	4,661	12.1	4,078	12.1	3,346	12.2	3,550	12.0
	School	377	10.6	405	10.3	485	10.3	399	10.2	264	10.1	259	10.3

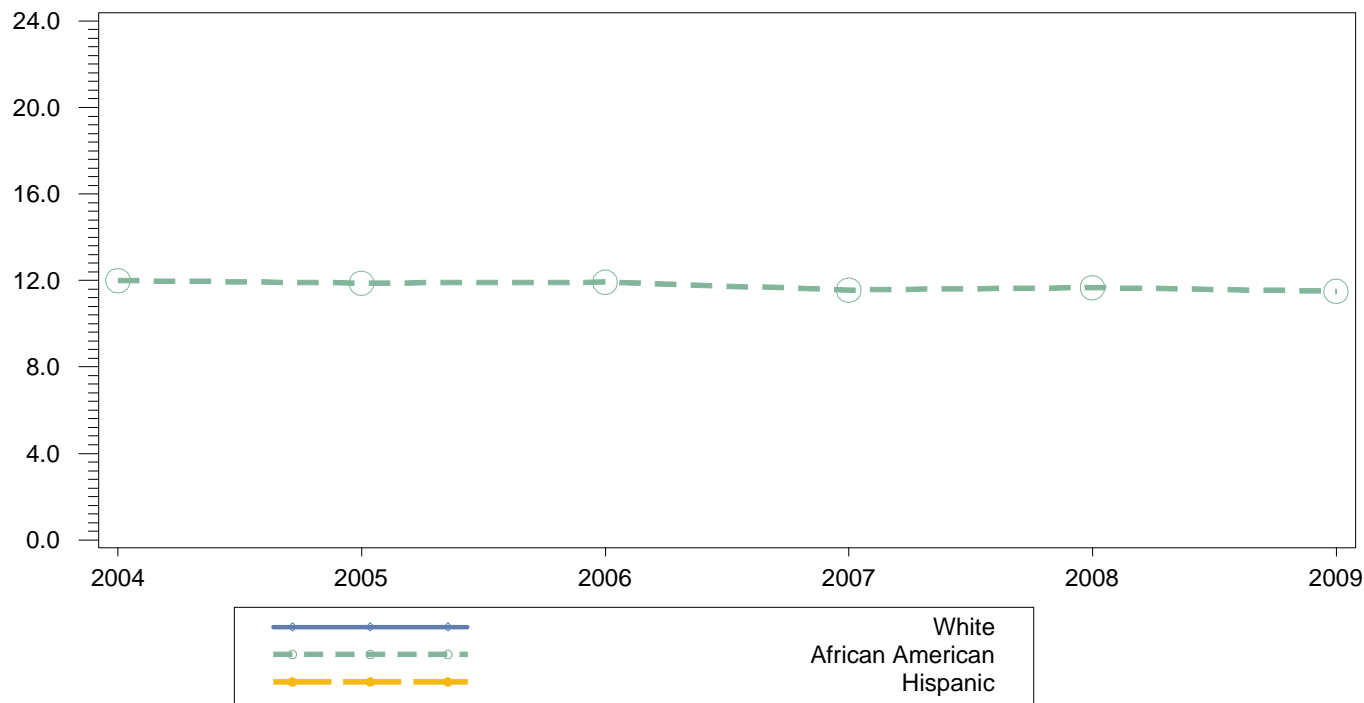
**Composite: Mean Explore Score
Annual Percentage**



City, Area and School Summary

	Year											
	2004		2005		2006		2007		2008		2009	
	<i>N</i>	<i>MEAN</i>	<i>N</i>	<i>MEAN</i>	<i>N</i>	<i>MEAN</i>	<i>N</i>	<i>MEAN</i>	<i>N</i>	<i>MEAN</i>	<i>N</i>	<i>MEAN</i>
City	26,998	14.1	27,667	14.1	28,765	14.0	27,513	13.9	25,543	14.1	26,325	14.1
Area	5,272	13.4	5,128	13.6	5,317	13.3	4,557	13.2	3,789	13.3	3,945	13.1
School	382	12.0	423	11.9	501	11.9	414	11.6	270	11.7	262	11.5

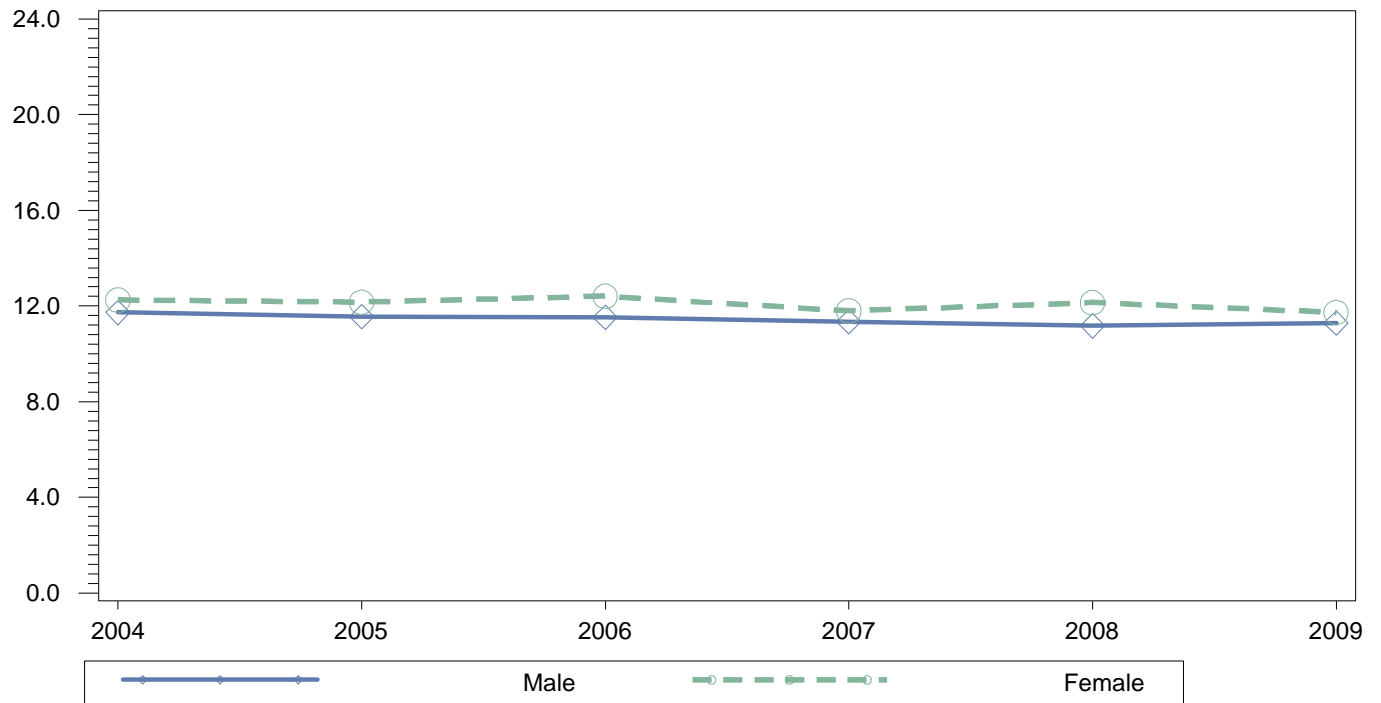
**Composite: Mean Explore Score
Annual Percentage by Race**



Area and Citywide Summary

Race		Year											
		2004		2005		2006		2007		2008		2009	
		N	MEAN	N	MEAN	N	MEAN	N	MEAN	N	MEAN	N	MEAN
African American	City	14,463	13.4	14,505	13.5	14,908	13.3	14,233	13.2	12,702	13.4	12,970	13.4
	Area	4,681	13.3	4,481	13.5	4,783	13.2	3,971	13.1	3,335	13.2	3,379	13.1
	School	382	12.0	422	11.9	500	11.9	414	11.6	270	11.7	262	11.5
Asian	City	942	17.0	980	17.0	1,010	16.9	876	17.2	982	17.3	923	17.1
	Area	4	.	4	.	3	.	5	.	3	.	3	.
Hispanic	City	9,092	14.1	9,667	14.1	10,296	14.0	10,024	13.9	9,606	14.1	10,345	14.1
	Area	465	14.1	546	13.8	453	14.0	523	14.0	389	14.1	502	13.5
	School	.	.	1
White	City	2,457	16.8	2,468	16.9	2,505	16.7	2,345	16.7	2,191	17.0	2,047	16.9
	Area	117	14.5	95	14.7	71	14.4	55	14.1	58	14.0	59	14.1
	School	1

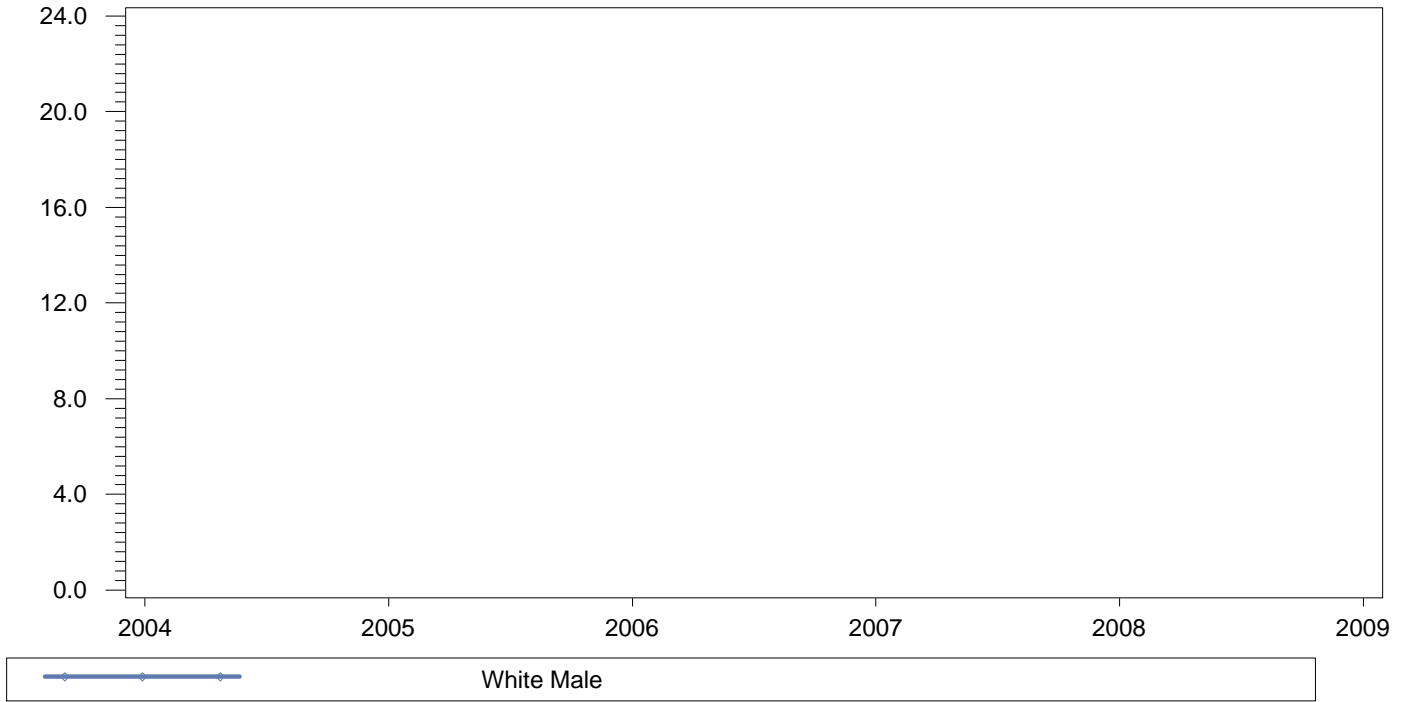
**Composite: Mean Explore Score
Annual Percentage by Gender**



Area and Citywide Summary

Gender		Year											
		2004		2005		2006		2007		2008		2009	
		N	MEAN	N	MEAN	N	MEAN	N	MEAN	N	MEAN	N	MEAN
Female	City	13,873	14.4	14,093	14.5	14,586	14.3	13,894	14.2	13,028	14.5	13,314	14.4
	Area	2,819	13.8	2,663	14.1	2,749	13.7	2,347	13.6	1,985	13.7	2,005	13.5
	School	192	12.3	218	12.2	223	12.4	194	11.8	138	12.1	125	11.7
Male	City	13,122	13.7	13,570	13.7	14,179	13.6	13,619	13.6	12,515	13.8	13,011	13.7
	Area	2,453	13.0	2,465	13.1	2,568	12.8	2,210	12.9	1,804	12.8	1,940	12.7
	School	190	11.7	205	11.6	278	11.5	220	11.3	132	11.2	137	11.3

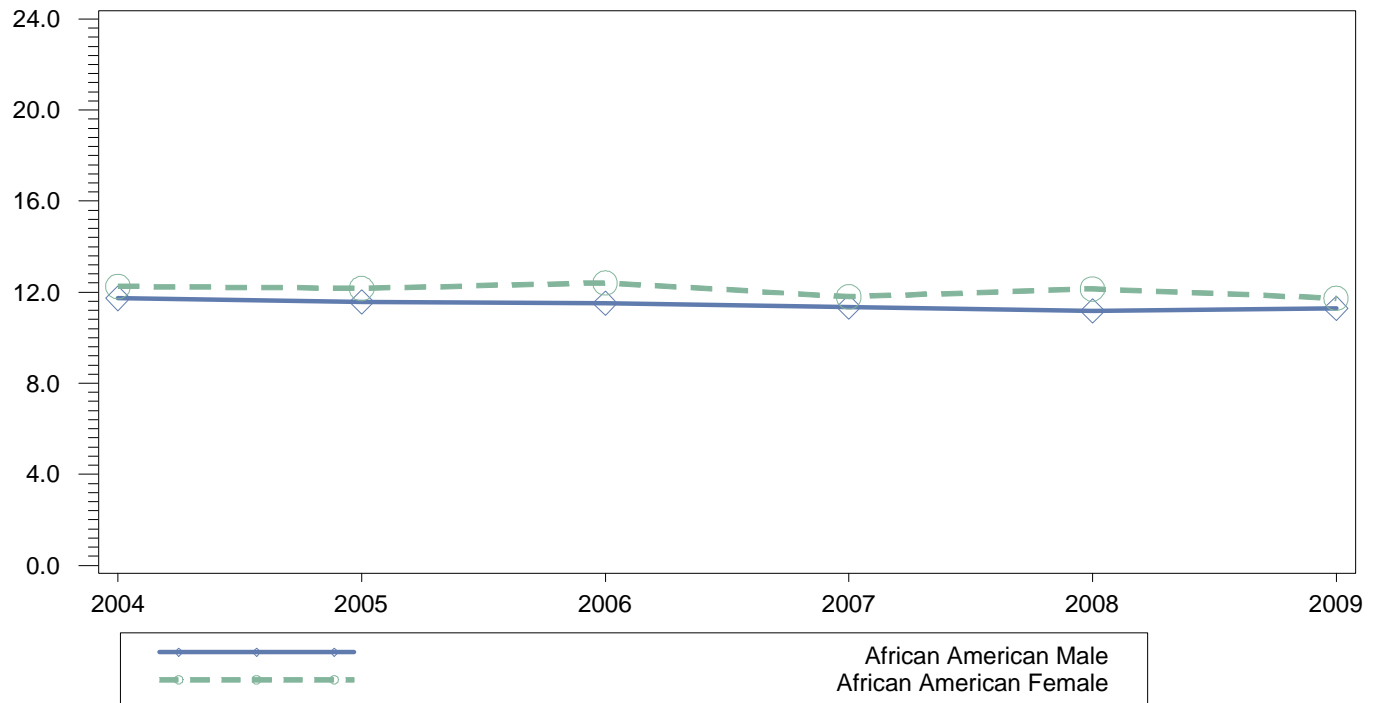
**Composite: Mean Explore Score
Annual Percentage by Gender for Race = White**



Area and Citywide Summary

		Year											
		2004		2005		2006		2007		2008		2009	
<i>Gender for Race = White</i>		<i>N</i>	<i>MEAN</i>	<i>N</i>	<i>MEAN</i>	<i>N</i>	<i>MEAN</i>	<i>N</i>	<i>MEAN</i>	<i>N</i>	<i>MEAN</i>	<i>N</i>	<i>MEAN</i>
White Female	City	1,212	17.2	1,240	17.3	1,200	17.0	1,176	17.2	1,095	17.4	1,022	17.3
	Area	57	15.0	39	15.3	31	14.9	32	14.2	25	14.3	24	14.8
White Male	City	1,245	16.4	1,228	16.5	1,305	16.3	1,169	16.3	1,096	16.6	1,025	16.6
	Area	60	14.0	56	14.3	40	14.0	23	13.9	33	13.7	35	13.5
	School	1

**Composite: Mean Explore Score
Annual Percentage by Gender for Race = African American**



Area and Citywide Summary

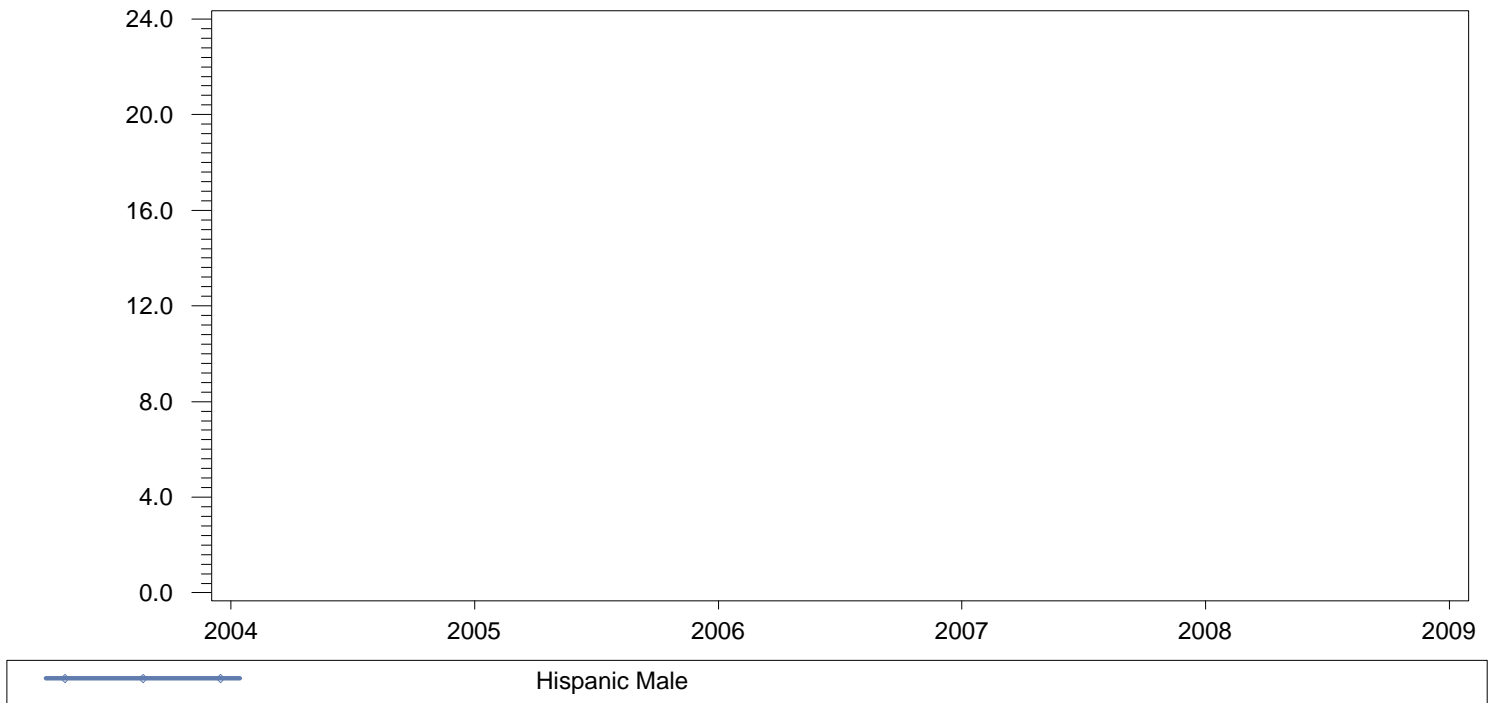
Gender for Race = African American	N	Year											
		2004		2005		2006		2007		2008		2009	
		N	MEAN	N	MEAN	N	MEAN	N	MEAN	N	MEAN	N	MEAN
African American Female	City	7,618	13.8	7,557	13.9	7,808	13.7	7,278	13.6	6,607	13.9	6,650	13.8
	Area	2,536	13.7	2,352	14.0	2,484	13.7	2,041	13.5	1,755	13.6	1,732	13.5
	School	192	12.3	218	12.2	223	12.4	194	11.8	138	12.1	125	11.7
African American Male	City	6,845	12.9	6,948	13.0	7,100	12.8	6,955	12.8	6,095	13.0	6,320	13.0
	Area	2,145	12.9	2,129	13.0	2,299	12.7	1,930	12.7	1,580	12.7	1,647	12.7
	School	190	11.7	204	11.6	277	11.5	220	11.3	132	11.2	137	11.3

**Composite: Mean Explore Score
Annual Percentage by Gender for Race = Asian**

Area and Citywide Summary

		Year											
		2004		2005		2006		2007		2008		2009	
<i>Gender for Race = Asian</i>		<i>N</i>	<i>MEAN</i>	<i>N</i>	<i>MEAN</i>	<i>N</i>	<i>MEAN</i>	<i>N</i>	<i>MEAN</i>	<i>N</i>	<i>MEAN</i>	<i>N</i>	<i>MEAN</i>
Asian Female	City	485	17.1	505	17.1	476	17.2	444	17.3	476	17.4	444	17.4
	Area	2	.	2	.	2	.	2	.	.	.	1	.
Asian Male	City	457	16.9	475	16.9	534	16.7	432	17.0	506	17.2	479	16.8
	Area	2	.	2	.	1	.	3	.	3	.	2	.

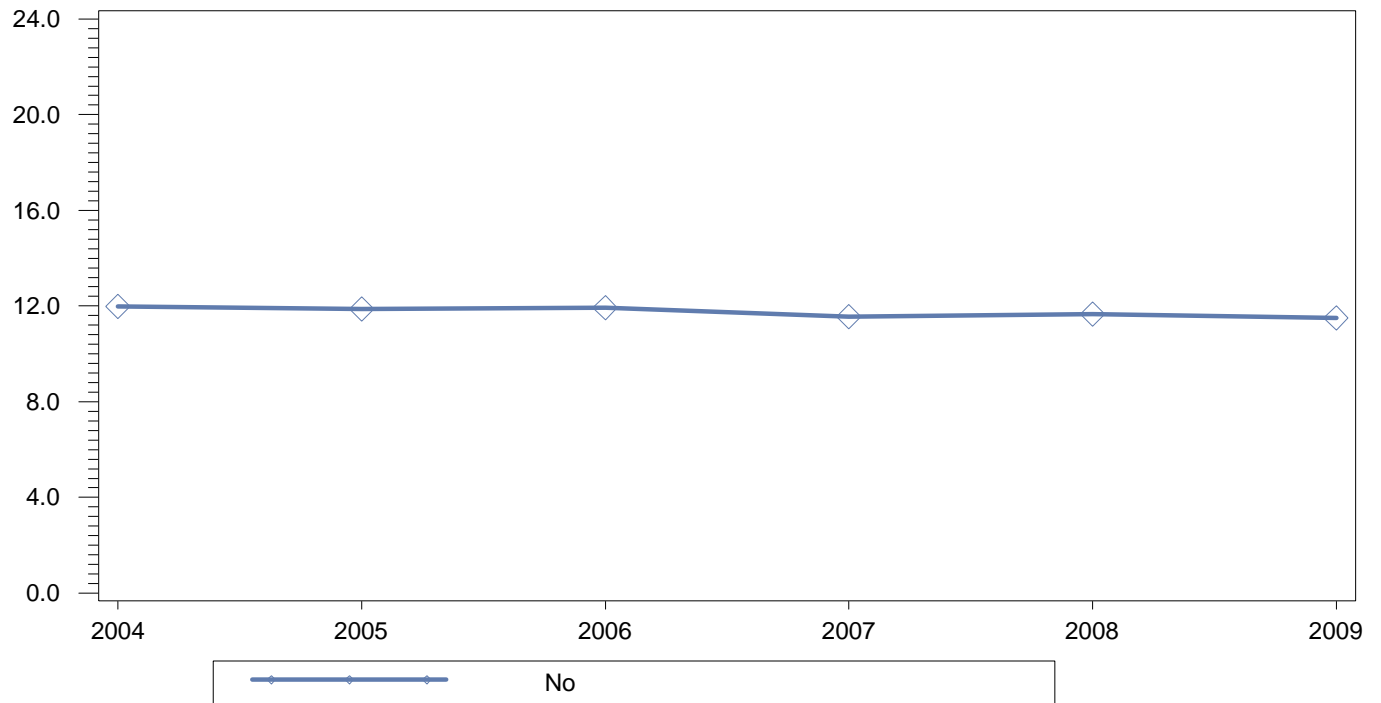
**Composite: Mean Explore Score
Annual Percentage by Gender for Race = Hispanic**



Area and Citywide Summary

		Year											
		2004		2005		2006		2007		2008		2009	
<i>Gender for Race = Hispanic</i>		<i>N</i>	<i>MEAN</i>	<i>N</i>	<i>MEAN</i>	<i>N</i>	<i>MEAN</i>	<i>N</i>	<i>MEAN</i>	<i>N</i>	<i>MEAN</i>	<i>N</i>	<i>MEAN</i>
Hispanic Female	City	4,530	14.4	4,767	14.4	5,076	14.2	4,974	14.2	4,812	14.3	5,179	14.3
	Area	220	14.4	268	14.3	227	14.3	271	14.1	203	14.2	247	13.8
Hispanic Male	City	4,562	13.8	4,900	13.8	5,220	13.8	5,050	13.7	4,794	13.9	5,166	13.8
	Area	245	13.9	278	13.3	226	13.8	252	14.0	186	14.0	255	13.1
	School	.	.	1

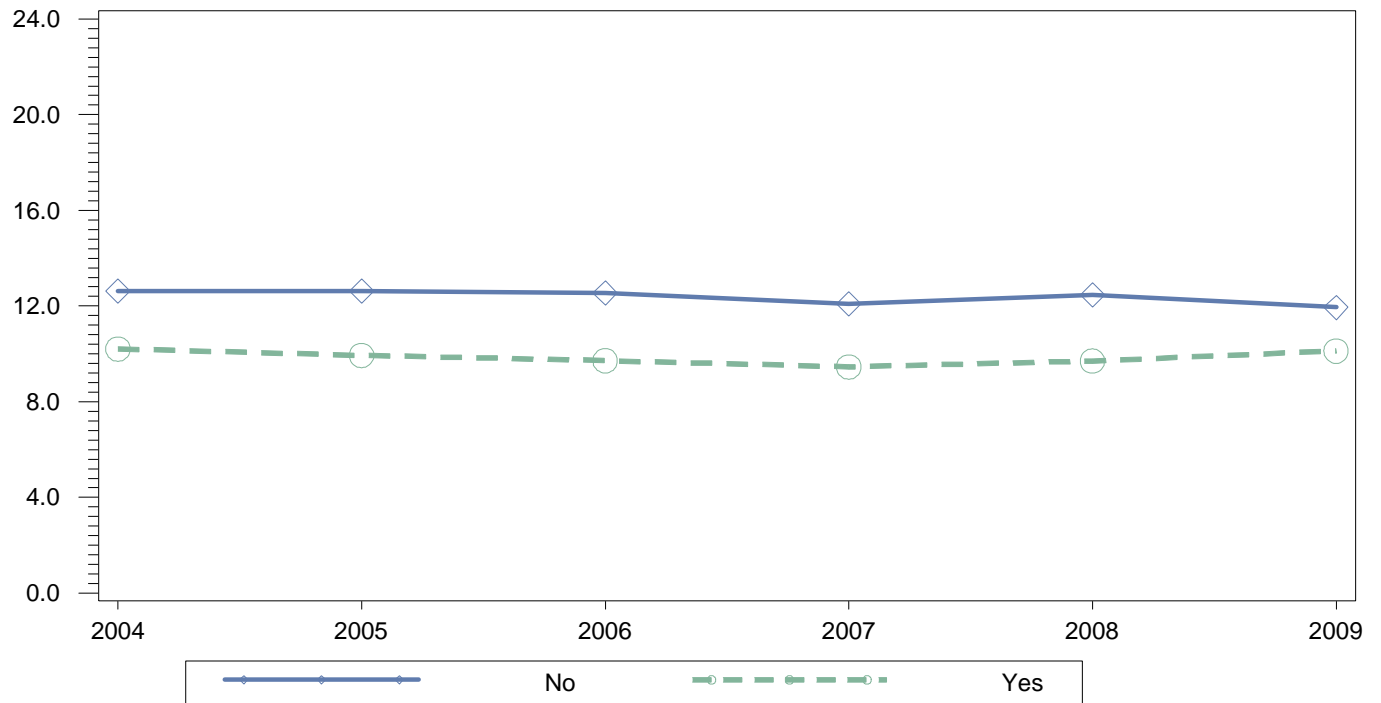
**Composite: Mean Explore Score
Annual Percentage by English Language Learner Status**



Area and Citywide Summary

		Year											
		2004		2005		2006		2007		2008		2009	
English Language Learner Status		N	MEAN	N	MEAN	N	MEAN	N	MEAN	N	MEAN	N	MEAN
No	City	26,071	14.1	26,616	14.2	27,656	14.1	26,465	14.0	24,407	14.2	25,241	14.2
	Area	5,255	13.4	5,101	13.6	5,296	13.3	4,517	13.2	3,748	13.3	3,904	13.2
	School	382	12.0	423	11.9	501	11.9	414	11.6	270	11.7	262	11.5
Yes	City	927	11.7	1,051	11.5	1,109	11.5	1,048	11.4	1,136	11.8	1,084	11.5
	Area	17	11.8	27	10.8	21	12.2	40	12.1	41	12.4	41	11.2

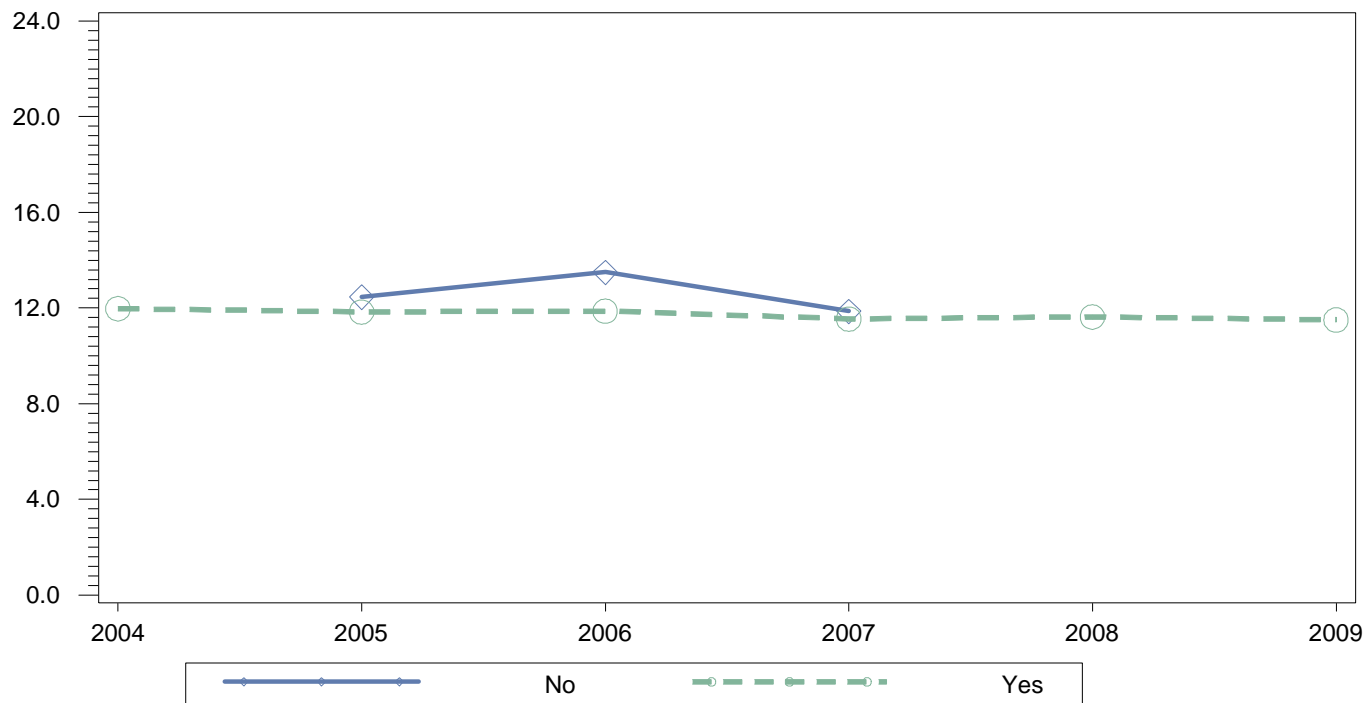
**Composite: Mean Explore Score
Annual Percentage by Individualized Education expl Status**



Area and Citywide Summary

		Year											
		2004		2005		2006		2007		2008		2009	
Individualized Education expl Status		N	MEAN	N	MEAN	N	MEAN	N	MEAN	N	MEAN	N	MEAN
No	City	23,575	14.5	24,279	14.6	25,311	14.4	24,229	14.3	22,656	14.6	23,660	14.4
	Area	4,564	13.9	4,449	14.0	4,628	13.7	4,042	13.6	3,299	13.7	3,445	13.5
	School	281	12.6	304	12.6	391	12.5	329	12.1	192	12.5	198	11.9
Yes	City	3,423	10.8	3,388	10.9	3,454	10.9	3,284	10.8	2,887	10.7	2,665	11.0
	Area	708	10.5	679	10.7	689	10.4	515	10.2	490	10.2	500	10.6
	School	101	10.2	119	9.9	110	9.7	85	9.5	78	9.7	64	10.1

**Composite: Mean Explore Score
Annual Percentage by Free/Reduced Lunch Status**



Area and Citywide Summary

		Year											
		2004		2005		2006		2007		2008		2009	
Free Reduced Lunch Status		N	MEAN	N	MEAN	N	MEAN	N	MEAN	N	MEAN	N	MEAN
No	City	4,267	16.2	4,443	16.0	4,576	16.1	4,673	16.1	6,225	15.2	4,323	16.0
	Area	743	14.2	727	14.5	683	14.4	497	14.4	469	14.2	425	13.8
	School	6	.	24	12.5	16	13.5	15	11.9	7	.	7	.
Yes	City	22,731	13.7	23,224	13.8	24,189	13.6	22,840	13.5	19,318	13.8	22,002	13.7
	Area	4,529	13.3	4,401	13.4	4,634	13.1	4,060	13.1	3,320	13.2	3,520	13.1
	School	376	12.0	399	11.8	485	11.9	399	11.5	263	11.6	255	11.5